



## Metamark MD-WR

'WallArt' Repositionable Decor Wall Covering

**Metamark 'Wallart' Repositionable** allows easy to install self-adhesive printable décor wall coverings, with a textured weave finish giving impactful graphics with deep tones, and excellent opacity.

The MetaScape® permanent solvent-based acrylic adhesive with air channels allows clean removal on sound sealed surfaces, to refresh the wall graphic or allow temporary drops.

**Performance you can trust**

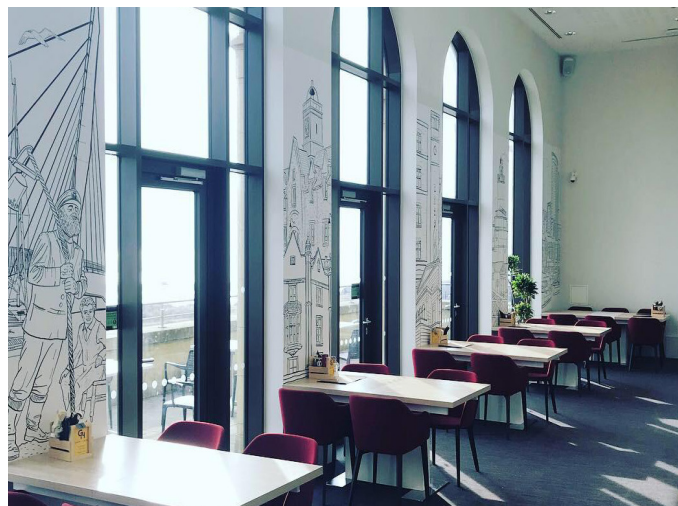
**METAMARK**  
The Materials Company

# Metamark MD-WR

'WallArt' Repositionable Decor Wall Covering

## Application Examples

See our Metamark MD-WR in action!



## Specifications

### Metamark MD-WR

Face Film	150 Micron Polymeric Calendered PVC
Adhesive	MetaScape® Removable Solvent-Based Acrylic with air channels
Liner	140gsm Structured Layflat PE Kraft Liner
Durability	7 Years <sup>1</sup> . Shelf life 2 years
Fire Rating	C-s1-d0 in accordance with BS EN 13823 (SBI): 2010 and EN 11925-2
Regulations	REACH & RoHS Compliant
Printing	Solvent / Eco-Solvent / Latex / UV inks
Finishes	Artisan
Roll Widths	760mm / 1370mm / 1520mm
Roll Lengths	15m / 30m

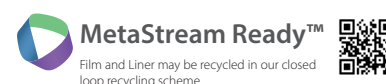
For full product information, application guides and technical support, visit [www.metamark.co.uk](http://www.metamark.co.uk).

For all pricing and sales enquiries contact us at:  
UK: 0345 345 5645 • International: +44 (0)1524 387132  
UK Email: [sales@metamark.co.uk](mailto:sales@metamark.co.uk)  
International Email: [internationalorders@metamark.co.uk](mailto:internationalorders@metamark.co.uk)

#### Metamark (UK) Limited

Metamark House, Genesis Business Park, Woking, GU21 5RW  
Luneside, New Quay Road, Lancaster, LA1 5QP

<sup>1</sup>Zone 1 - for other regions and climates in regards to material external weathering, please refer to our full Durability Guide found on our website. All information stated is correct at time of creation.



**METAMARK**  
The Materials Company