



**METAMARK**  
The Materials Company

# Accessories

For Sign, Graphic &  
Vehicle Wrap Professionals

EDITION 7

# Contents

## 01 Surface Preparation

Metamark Surface Cleaner, Adhesive Remover and IPA. Microfibre Cloths and Masking Tape. A step-by-step set to prepare for vinyl application.

## 02 Measuring and Cutting

Whether in the print finishing room or out on site, the Metamark branded range of tools sets a professional impression before you start. The SafeEdge Cutting Rulers and SoftGrip Tape Measures will give long term service thanks to their great ergonomics and robust construction.

## 03 Squeegees

A wide range of plastic squeegees, felt edge squeegees, felt buffer strips and micro squeegee tools. Squeegees are a personal choice but we have selected the best.

## 04 Knives and Blades

Top brand OLFA® and Swann Morton knives and blades specifically selected for their popularity with Wrap Professionals, plus safety cutters and vinyl sheet cutters.

## 05 Vinyl Removal

Scrapers and plastic blades for quick and damage-free removal of graphics from a wide range of surfaces.

## 06 Wrap Tools

Vehicle Wrap Magnets, Channel Applicators, Rubber Trim Lifting Set, Vehicle Badge Removal Tool and Wrap Gloves. Tools for Wrap Professionals.

## 07 Knifeless / Filament Tapes

3M™ Knifeless and Wrapcut™ Filament Tapes, designed to cut graphic film without using knives on vehicles.

## 08 Thermal Devices

Digital Thermometers and Heat Guns ideally suited to vehicle wrap applications.

## 09 PPF Accessories

To compliment and support our M-PPF® series, we have a comprehensive range of Tools and Accessories developed specifically for paint protection film installation.

## 10 Automotive Detailing

Metamark now offers a range of automotive detailing products, including high-performance ceramic coatings and advanced detailers. Elevate your car care routine with our precision-engineered solutions.

## 11 Application Tapes

Metamark offers a comprehensive range of paper and polypropylene Application Tapes selected to work perfectly with Metamark Vinyl.

## 12 Double Sided Tapes

Metamark double-sided tapes are UK manufactured, advanced engineered tapes, ensuring high bond where a non-mechanical fixing is required. Suitable for a wide range of applications, including sign channels, acrylic, PVC, banner, exhibition and point of sale. Backed by the Metamark warranty and priced to make sense.

## 13 Miscellaneous Tapes

Masking Tape, Hook and Loop Tape, Magnetic Tape, AURA® 144 Conspicuity Tape and Social Distancing Tape.

## 14 Banner Finishing

A range of banner finishing tapes, to offer a quick and simple alternative to traditional welding or stitching. Also including Application Rollers for banner hemming.

## 15 Roller Display Stands

Metamark offers a range of competitively priced high quality roll up banner display stands, available in a variety of widths. All come with a carrying case and are attractive and easy for the end user and signmaker to handle.

## 16 Vinyl Plotter Cutting Blades

Metamark precision tungsten carbide blades for vinyl cut plotters. These quality blades offer a cost effective alternative to the OEM supplied blades.

## 17 Colour Matching Guides

The Pantone® Formula Guides and the RAL Guide allow accurate cross referencing to industry standard colours.



## Ordering from Metamark

Place your order before 5pm and it will be delivered the next working day. Our stock position ensures that your needs are always met and we are ready to despatch. Additions can be made to orders at any time during the day and we offer a range of competitively priced timed delivery services.

### Delivery Charges

<b>Next Day Delivery £9.95</b>	Free for orders over £130
<b>Next Day Pre-Noon</b>	Delivery Upgrade – add £3.50
<b>Northern Ireland/Isle of Man £15</b>	Free for orders over £200
<b>UK Offshore £29.50</b>	Free for orders over £200
<b>Recorded Post £2</b>	Only available on small items

## Payment Methods

We will be pleased to consider opening a credit account which will allow payment at 30 days nett, subject to status, and we also accept payment by MasterCard and Visa credit cards as well as Maestro and Visa debit cards. Prices listed in this catalogue are exclusive of VAT which will be added.

## Sales Office Hours

The Sales Office is open continuously from 9am to 5pm from Monday to Friday. For enquiries call **0345 345 5645** or alternatively email **sales@metamark.co.uk**.

# 01 Surface Preparation



*Scan here*

For more information  
on the product range  
and the latest pricing

# Get ready to *prep!*

Metamark digital print media has built a reputation for being among the very best in the market, specified the world over for being the benchmark when it comes to brilliant colour reproduction and consistency.

Preparing your surfaces so they are ready for the Metamark media is a key process. It should give you the confidence that you will get the most out of the media capability.

Metamark makes the process easy, with step-by-step cleaning products and accessories that allow you to create a pristine surface.

**Perfect results, every time!**



Preparation is  
*key!*



## Metamark Adhesive Remover

For effective removal of adhesive, tar, grease and other road grime. Powerful cleaner formulated to cut through contaminants adverse to vinyl application. Also suitable as adhesive remover to break down residual solvent based adhesives. After application, use Metamark Surface Cleaner. Apply with clean lint free microfibre cloth. Supplied in spray gun. Packed individually, 4 or 12 pack.

Code	Description
AC-SAR	Metamark Adhesive Remover 1 litre
AC-SAR-4	Metamark Adhesive Remover 1 litre (Box of 4)
AC-SAR-12	Metamark Adhesive Remover 1 litre (Box of 12)



## Metamark Surface Cleaner

The best single action cleaner you will ever use! Metamark Surface Cleaner cuts through mild grease or silicone, road film and other contaminants to leave a highly cleaned vinyl-ready surface. This highly effective, user-friendly, go-to product can be used on its own or as part of a multi-step cleaning process, on vehicle panels, glass or trim. Apply with clean lint free microfibre cloth. Supplied in spray gun. Packed individually, 4 or 12 pack.

Code	Description
AC-SSC	Metamark Surface Cleaner 1 litre
AC-SSC-4	Metamark Surface Cleaner 1 litre (Box of 4)
AC-SSC-12	Metamark Surface Cleaner 1 litre (Box of 12)



## Metamark Isopropyl Alcohol (IPA)

IPA provides effective clean of grease, oils and adhesive residue. The high alcohol content gives assurance the surface is clean and ready for vinyl graphic application. Fast evaporation. Apply with clean lint free microfibre cloth. Packed individually, 4 or 12 pack.

Code	Description
AC-SIPA	Metamark Isopropanol 1 litre
AC-SIPA-4	Metamark Isopropanol 1 litre (Box of 4)
AC-SIPA-12	Metamark Isopropanol 1 litre (Box of 12)



## Metamark Application Fluid

Metamark Application Fluid has an advanced formula for ease of wet application. Excess fluid dries faster to leave a perfect finish. It is ideal for use with Metamark Apex solvent adhesives. The 1 litre is supplied with spray gun and packed individually, 4 or 12 pack. Also available in 5 litre refill.

Code	Description
AC-SAF	Metamark Application Fluid 1 litre
AC-SAF-4	Metamark Application Fluid 1 litre (Box of 4)
AC-SAF-12	Metamark Application Fluid 1 litre (Box of 12)
AC-SAF-5	Metamark Application Fluid 5 litre
AC-SAF-54	Metamark Application Fluid 5 litre (Box of 4)



**METAMARK**  
The Materials Company



**SILVERBULLET®**  
**LARGE FORMAT PRO PRIMER**

### 'Silver Bullet' Pro Wall Primer

'Silver Bullet' Pro Wall Primer has been uniquely developed for the large format décor print application. ISA Product of the Year 2019 Winner, is now part of the Metamark range of surface preparation fluids. Recommended for the Metamark DécorMark wall coverings range. 'Silver Bullet' Pro Primer overcomes the variability of existing wall finishes, to ensure trouble free wall graphics. It has a low odour, quick drying formula and dries clear. The 5 litre container covers up to 25-50 sq m.



Code	Description
AC-SBW-5	Metamark Silver Bullet Pro Wall Primer 5 litre

## Microfibre Cleaning Cloths

High quality microfibre soft knit cloths, perfect for vehicle detailing and for use with surface preparation of vinyl graphics. Lint free 300gsm cloth with soft hem. Use the various colours to identify which cleaners are being used so as to avoid cross contamination. Finish with a white cloth to ensure all debris is removed. Machine washable 40°C, 30% Polyamide, 70% Polyester. 40cm x 40cm. Packed in 10s. A Mixed Pack contains a set of one each of Purple, Grey and White, as a ready to go kit to match to the surface cleaners.

Code	Description
<b>AC-MFP</b>	Microfibre Cloth 40cm x 40cm Purple (10 pack)
<b>AC-MFW</b>	Microfibre Cloth 40cm x 40cm White (10 pack)
<b>AC-MFG</b>	Microfibre Cloth 40cm x 40cm Grey (10 pack)
<b>AC-MF3</b>	Microfibre Cloth 40cm x 40cm Mixed (3 pack)



## Masking Tape



Scapa 9080S is coated with an aggressive rubber/resin solvent based adhesive system, and recommended for all general purpose applications. Features include clean removal at room temperature, with smooth and controlled unwind. The tape is flexible and conformable, with good peel adhesion, shear and holding strength. It is resistant to mild chemicals, lacquers, solvents and water.

Code	Description
<b>MT25MASK</b>	Masking Tape Scapa 9080S 25mm
<b>MT25MASK-36</b>	Masking Tape Scapa 9080S 25mm (36)
<b>MT50MASK</b>	Masking Tape Scapa 9080S 50mm
<b>MT50MASK-24</b>	Masking Tape Scapa 9080S 50mm (24)



Metamark surface cleaning products achieve a perfectly prepared finish for vinyl application to vehicles. Each product performs part of a step-by-step process to remove contaminants.



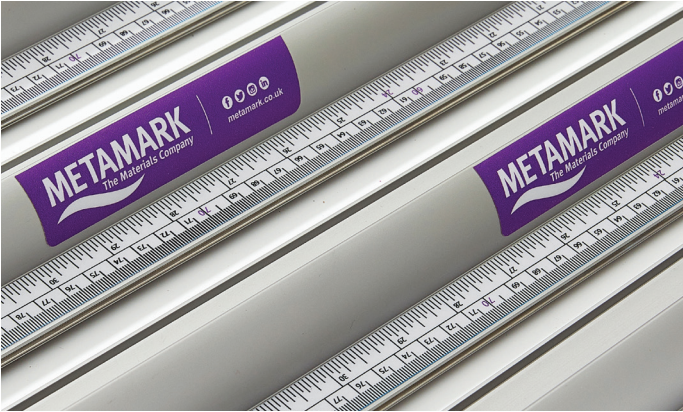
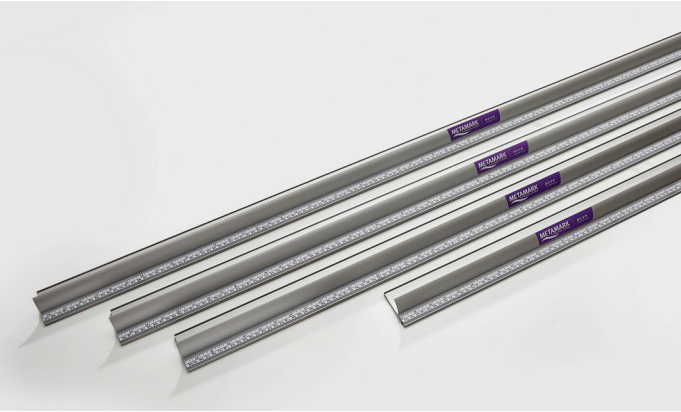
## 02 Measuring and Cutting



*Scan here*

For more information  
on the product range  
and the latest pricing

Measure Twice.  
*Cut Once!*



Metamark SafeEdge Ruler

The Metamark SafeEdge is an aluminium professional safety rule, with a hardened steel cutting edge and curved finger guard. On the base is a pair of anti-slip grips that unlike foam do not absorb water. The measure is in metric and imperial. Supplied in a range of sizes, the SafeEdge is a must have for the finishing room.

Code	Description
AC-SR162	SafeEdge Straight Edge Ruler 1620mm
AC-SR140	SafeEdge Straight Edge Ruler 1400mm
AC-SR125	SafeEdge Straight Edge Ruler 1250mm
AC-SR62	SafeEdge Straight Edge Ruler 620mm

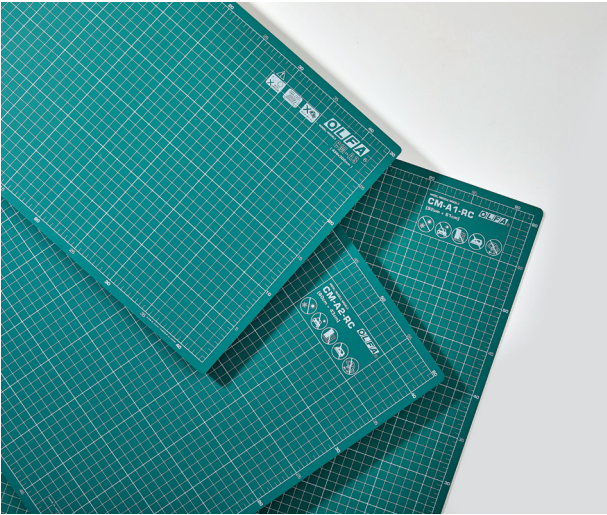
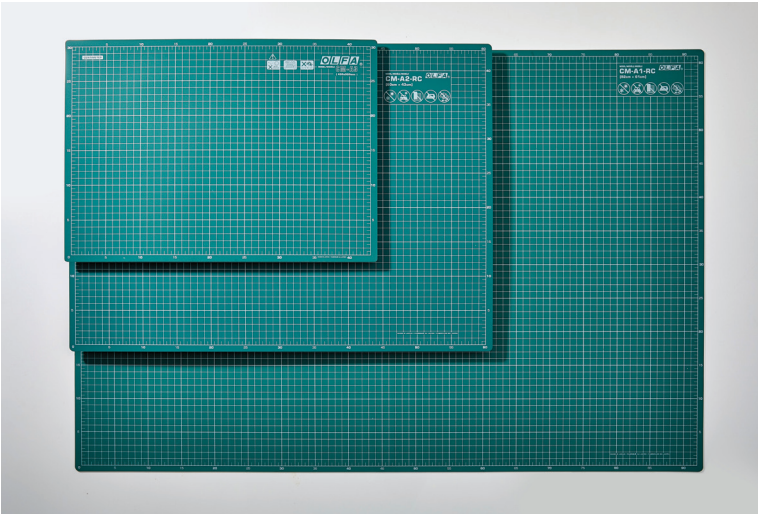




### Metamark SoftGrip Chrome Tape Measure

The Metamark SoftGrip Chrome Tape Measure offers a soft grip case and chrome ABS body. They measure both metric and imperial, and include feet and metre increments. The nylon coated 8m measure has a sturdy 25mm width tape to prevent flex, the 3m is a compact 16mm design. Arrive on site with the Metamark branded range of tools.

Code	Description
AC-MT3	Metamark SoftGrip Chrome Tape Measure 3m
AC-MT8	Metamark SoftGrip Chrome Tape Measure 8m



### OLFA® Self Healing Double Sided Cutting Mat

OLFA® brand premium cutting mats, featuring self-healing surface and DEHP free. The double sided design has one side with a metric grid, and the other side displays inches. The self-healing surface helps you achieve precise cuts, while extending the life of the blades.

Code	Description
AC-CMA1	OLFA® Self Healing D/Sided Cutting Mat A1 (92cm x 61cm)
AC-CMA2	OLFA® Self Healing D/Sided Cutting Mat A2 (60cm x 43cm)
AC-CMA3	OLFA® Self Healing D/Sided Cutting Mat A3 (43cm x 30cm)



## 03 Squeegees



*Scan here*

For more information  
on the product range  
and the latest pricing

## Metamark White Felt Edge Squeegee

Supplied with a premium grade soft smooth felt edge, this is a go-to squeegee that gives the perfect blend of a soft plastic edge and scratch free edge, at an everyday price. Packed individually or in 10s.

Code	Description
<b>SQU-WF</b>	Metamark White Felt Edge Squeegee
<b>SQU-WF-10</b>	Metamark White Felt Edge Squeegee (10)



## Metamark Teflon Squeegee

Ultra-smooth Teflon® compound very hard squeegee, ideal for Paint Protection Film and other films requiring a scratch free application. Use straight from the pack, or apply your favourite felt edge to give the ultimate flat surface wrap squeegee. Packed individually or in 10s.

Code	Description
<b>SQU-T</b>	Metamark Teflon Squeegee
<b>SQU-T-10</b>	Metamark Teflon Squeegee (10)



## Metamark Premium White Squeegee

A really nice to handle squeegee in a medium to hard compound. This Metamark squeegee is really versatile, great when used with a Monkey Edge Strip, or use as is with its precise edge. It has a premium feel, at an everyday price.

Code	Description
<b>SQU-WP</b>	Metamark Premium White Squeegee
<b>SQU-WP-10</b>	Metamark Premium White Squeegee (10)





# Monkey Strips

## Wrap Pro Felt Edges

Metamark Monkey Strips are the ultimate felt edges for the wrap professional. Available as customisable Monkey Tails, Monkey Strips or wrap around Monkey Wings, whichever format you choose, add a protective buffer to your squeegee.



## Metamark 'Monkey Strips' – Felt Squeegee Pads

Monkey Strips are pre-cut felt edges that are ideal for vehicle wrap installations. These durable buffers have a low friction surface that allows the squeegee to glide across the film and reduce common scratches to almost zero. Monkey Strips can be easily removed and leave little to no adhesive residue on the squeegee. Specially unique to Monkey Strips is their thinness allowing an installer to apply the film with more precision and less heat. Packed in 50s. Can be used wet.



Code	Description
AC-SQP4	Metamark Monkey Strips (50) – Felt Squeegee Pads



## Metamark 'Monkey Tails' – Felt Squeegee Pads

High quality felt edge supplied on the roll. Monkey Tails are made out of the same thin, soft, durable felt as the Monkey Strips. Monkey Tails are one long roll which allows installers to make a custom buffer for any sized squeegee. The length of the Monkey Tail is equivalent to 51 Monkey Strips or one incredibly large squeegee. The professional choice for a felt edge buffer. Each roll is 3 x 1.7m length x 32mm. Can be used wet.

Code	Description
AC-SQP5	Metamark Monkey Tails (5.1m roll) – Felt Squeegee Pads



## Metamark 'Monkey Wings' – Felt Squeegee Pads

Monkey Wings, felt buffers that are profile cut to wrap around a 100mm squeegee to give extra protection to the corners. Monkey Wings are made out of the same thin, soft, durable felt as the Monkey Strips. Boxed in 10s, in a polypropylene case. The professional choice for a felt edge buffer. Can be used wet.



Code	Description
AC-SQP6	Metamark Monkey Wings (10) – Felt Squeegee Pads



## Avery Dennison® Blue Felt Edge Squeegee

Supplied with a felt edge, this blue medium hard squeegee is a wrap professional favourite, for use on flat or simple curves. Supplied individually or packed in 12s.

Code	Description
<b>SQU-A</b>	Avery Dennison® Blue Felt Edge Squeegee
<b>SQU-A-12</b>	Avery Dennison® Blue Felt Edge Squeegee (12)



## Avery Dennison® Red Pro Flex Felt Edge Squeegee

Supplied with a felt edge, this soft squeegee is a wrap professional favourite, for use around 3D curved applications on vehicle panels. Supplied individually or packed in 12s.

Code	Description
<b>SQU-AR</b>	Avery Dennison® Red Pro Flex Felt Edge Squeegee
<b>SQU-AR-12</b>	Avery Dennison® Red Pro Flex Felt Edge Squeegee (12)



## Contour Yellow Squeegee

The Contour Yellow Squeegee offers a unique shape for automotive window tinting. The shape allows it to disperse film finger tension in tough areas, and also offers an ideal detailing squeegee on wraps.

Code	Description
<b>SQU-CTR</b>	Contour Wrap Squeegee Yellow



## 3M™ Gold PA1 Squeegee

Medium hard squeegee known for its durability. The compound withstands daily use well. Use as a plastic application or equip with felt edge to prevent scratching. Packed individually or in 10s.

Code	Description
<b>SQU-G</b>	3M™ Gold PA1 Squeegee
<b>SQU-G-10</b>	3M™ Gold PA1 Squeegee (10)





## Felt Block Squeegee

This Felt Block Squeegee allows a very forgiving scratch free application of vinyl. A solid 12mm block of felt, available individually or packed in 10s.

Code	Description
<b>SQU-F</b>	Metamark Felt Block Squeegee
<b>SQU-F-10</b>	Metamark Felt Block Squeegee (10)



## Application Rollers

Application rollers for banner hemming, wall décor overlaps, and general sign application. These premium grade rollers are made from silicon to give a smooth consistent application. They are made of a durable construction.

Code	Description
<b>AC-RS45</b>	Silicon Application Roller 45mm
<b>AC-RS95</b>	Silicon Application Roller 90mm



## Micro Squeegee Tools Set

This set of micro squeegees are designed to allow detailed application of vinyl wrap graphics into tight areas to access. These micro squeegees come in a set of 3 tools with a hard black, a medium red, and a soft blue applicator. Length 168mm.



Code	Description
<b>AC-WTM</b>	Wrap Tools Micro Squeegee Set (3)



## Squeegee Buffer Pads – Teflon

These squeegee pads can be applied to standard 4" plastic squeegees, to allow scratch free application of vinyl. Packed in 5s.



Code	Description
<b>AC-SQP2</b>	Squeegee Pads – Teflon Edges (5)



# 04 Knives and Blades



*Scan here*

For more information  
on the product range  
and the latest pricing



# Swann-Morton®

Swann-Morton are the ubiquitous brand for scalpels and blades across the sign and graphics industries and it is easy to see why. Sheffield steel manufactured to surgical quality standards. Swann-Morton have many years of evolving their products with a single goal, to produce the very finest scalpels and blades!

At Metamark, we supply a selection of the respected range as listed overleaf.





## Swann-Morton No.3 Scalpel Handle

Swann-Morton No.3 stainless steel handles, with a measure or graduation on the reverse side. Supplied individually wrapped and boxed in units of 10, non sterile. Fitment for Blades – No.10a, 11. The industry standard craft scalpel with disposal blade. Blades not included.

Code	Description
SC-3-01	Swann-Morton No.3 Scalpel Handle
SC-3-10	Swann-Morton No.3 Scalpel Handle – Box of 10
<b>Compatible Blades</b>	
BL-10	Swann-Morton No.10a Non Sterile Blades (100)
BL-11	Swann-Morton No.11 Non Sterile Blades (100)



## Swann-Morton Retractable Handle Set

Swann-Morton blue retractable scalpel handle set, including 5 No.10a blades. Handy tool provides added safety with precision blades. Individually packed, non sterile. Blade suitability No.10a, 11.

Code	Description
SC-R	Swann-Morton Retractable Handle (5 blades)
<b>Compatible Blades</b>	
BL-10	Swann-Morton No.10a Non Sterile Blades (100)
BL-11	Swann-Morton No.11 Non Sterile Blades (100)



## Swann-Morton ACM Scalpel Handle

Swann-Morton ACM fixed blade scalpel handle including blade. Part of the Swann-Morton Arts, Crafts and Modellers range, this handle has a knurled grip and protective plastic cover supplied. Non sterile. Blade suitability No. ACM1 (BL-X1).

Code	Description
SC-X1	Swann-Morton ACM Scalpel Handle and Single Blade Set
<b>Compatible Blades</b>	
BL-X1	Swann-Morton ACM1 Non Sterile Blades (50)





## Swann-Morton No.10a Scalpel Blades

The 10a is a straight edged blade that fits handle No.3. The Swann-Morton 10a blade became the tool of choice for graphic artists and the design and print industry. Non sterile. Foil wrapped and supplied in boxes of 100.

Code	Description
<b>BL-10</b>	Swann-Morton No.10a Non Sterile Blades (100)



## Swann-Morton No.11 Scalpel Blades

The 11 features a low profile for added precision. The fine tip is ideal for detail. Non sterile. Foil wrapped and supplied in boxes of 100.

Code	Description
<b>BL-11</b>	Swann-Morton No.11 Non Sterile Blades (100)



## Swann-Morton ACM Blades

Swann-Morton ACM fixed blade. Part of the Swann-Morton Arts, Crafts and Modellers range. Individually wrapped in protective paper and supplied in boxes of 50.

Code	Description
<b>BL-X1</b>	Swann-Morton ACM1 Non Sterile Blades (50)



## Metamark Guard Knife

The Guard Knife allows easy and safe cutting of vinyl. The blade is protected by a steel shield, while the base has a Teflon strip to prevent scratching of the base substrate. Replacement blades supplied in packs of 5.

Code	Description
<b>SC-Guard</b>	Metamark Guard Knife
<b>BL-Guard</b>	Metamark Guard Knife Blades (Pack of 5)



## Metamark Safety Cutter

The Safety Cutter is a compact handy tool for quick safe cutting of vinyl and paper. The blade is shielded by the unique design and replacements are available in packs of 10. This pocket sized tool is an ideal addition to any workshop or for use around the print production area.

Code	Description
<b>AC-SN1</b>	Sheet Slitter Safety Cutter
<b>AC-SNBL1</b>	Sheet Slitter Safety Blades (Pack of 10)





The superior quality of OLFA® blades is the result of a multi-step production process. Only the finest quality tool steel is selected for use. OLFA® has established itself with an enviable reputation within the sign and graphics industry. Quick, easy and safe!

Metamark is pleased to be able to supply a selection of tools from the OLFA® range.



OLFA® 180BLK – Lightweight Metal Body Cutter

The OLFA® 180BLK Snap-Off cutter features a lightweight metal body which is ideal for light-duty cutting jobs. The pocket clip and built-in blade snapper are useful and the stainless steel blade channel will remain rust-free forever.

Code	Description
SC-180BLK	OLFA® Lightweight Metal Body Cutter
Compatible Blades	
BL-AB10S	OLFA® Stainless Snap-Off Blade 9mm (10)
BL-AB50S	OLFA® Stainless Snap-Off Blade 9mm (50)
BL-ABB10B	OLFA® Excel Ultra Sharp Snap-Off Blade 9mm (10)
BL-ABB50B	OLFA® Excel Ultra Sharp Snap-Off Blade 9mm (50)



OLFA® SAC-1 – Ultra Slim Graphics Cutter

The OLFA® SAC-1 is an ultra slim, snap-off cutter with a unique 30° angled blade. The idea behind the acute angle is to get the sharpest point of the blade onto the surface to be cut, when cutting from a typical height on a table. The cutter features an auto-lock mechanism that keeps the blade firmly in place when cutting. It also features a built-in pocket clip and blade snapper. The body is made from stainless steel and will remain rust-free forever.

Code	Description
SC-SAC1	OLFA® Ultra Slim Graphics Cutter
Compatible Blades	
BL-SAB10B	OLFA® Endurance 30° Snap-Off Blade 9mm (10)





## OLFA® SVR-2 – Ultra Slim Stainless Steel Cutter

The OLFA® SVR-2 has an ultra slim, stainless steel body, and comes pre-loaded with a stainless steel snap-off blade, perfect for wet use without the worry of rust. The stainless steel blades will also not scratch glass, making them perfect for the window tinting industry. The cutter features an auto-locking blade mechanism that keeps the blade firmly in place at any extension and also includes a pocket clip and blade snapper.

Code	Description
<b>SC-SVR2</b>	OLFA® Ultra Slim Stainless Steel Cutter
<b>Compatible Blades</b>	
<b>BL-AB10S</b>	OLFA® Stainless Snap-Off Blade 9mm (10)
<b>BL-AB50S</b>	OLFA® Stainless Snap-Off Blade 9mm (50)
<b>BL-ABB10B</b>	OLFA® Excel Ultra Sharp Snap-Off Blade 9mm (10)
<b>BL-ABB50B</b>	OLFA® Excel Ultra Sharp Snap-Off Blade 9mm (50)



## OLFA® XA-1 – Design Cutter with Auto-Lock

The OLFA® XA-1 benefits from X-Design™ excellence. This means that it has a very comfortable, anti-slip grip, allowing you to use maximum pressure to cut, safely. The elastomeric grip takes a lot of the pressure off your hand, resulting in greatly reduced strain over long periods of use. The XA-1 has an auto-lock to keep the blade in place during use, and a built-in pocket clip and blade snapper. Pre-loaded with an Excel Black™ ultra sharp blade.



Code	Description
<b>SC-XA1</b>	OLFA® X-Design Cutter with Auto-Lock
<b>Compatible Blades</b>	
<b>BL-AB10S</b>	OLFA® Stainless Snap-Off Blade 9mm (10)
<b>BL-AB50S</b>	OLFA® Stainless Snap-Off Blade 9mm (50)
<b>BL-ABB10B</b>	OLFA® Excel Ultra Sharp Snap-Off Blade 9mm (10)
<b>BL-ABB50B</b>	OLFA® Excel Ultra Sharp Snap-Off Blade 9mm (50)





### OLFA® AB50S – Stainless Snap-Off Blade 9mm

OLFA® STAINLESS STEEL™ blades are sharper than most other Snap-Off blades in the world, and rust-proof. This makes them perfectly suitable when things can get a little wet or moist. This 9mm size is 0.38mm thick and has 13 snap segments. Packed in boxes of 50.

Code	Description
BL-AB50S	OLFA® Stainless Snap-Off Blade 9mm (50)



### OLFA® AB10S – Stainless Snap-Off Blade 9mm

OLFA® STAINLESS STEEL™ blades are sharper than most other Snap-Off blades in the world, and rust-proof. This makes them perfectly suitable when things can get a little wet or moist. This 9mm size is 0.38mm thick and has 13 snap segments. The plastic pack has a useful section which you can use to snap off and safely store used blade segments. Packed in boxes of 10.

Code	Description
BL-AB10S	OLFA® Stainless Snap-Off Blade 9mm (10)



### OLFA® SAB10B – Endurance 30° Snap-Off Blade 9mm

Made from high carbon tool steel (SK-2) and sharper than most other Snap-Off blades in the world, these OLFA® Snap-Off blades have a unique 30° angle. The idea behind the acute angle is to get the sharpest point of the blade onto the surface to be cut, when cutting from a typical height on a table. The blade is 0.38mm thick and has 7 snap segments. Packed in boxes of 10.



Code	Description
BL-SAB10B	OLFA® Endurance 30° Snap-Off Blade 9mm (10)



### OLFA® ABB10B – Excel Ultra Sharp Snap-Off Blade 9mm

OLFA® EXCEL BLACK™ takes blade sharpness to the next level. OLFA®'s secret, advanced production process makes this blade 25% sharper than Endurance™ blades. Not only do the blades last much longer than conventional blades, they give you clean cuts that show off the quality of your work. The 9mm EXCEL BLACK™ blade is 0.38mm thick and has 13 snap segments. The plastic pack has a useful section which you can use to snap off and safely store used blade segments. Packed in boxes of 10.



Code	Description
BL-ABB10B	OLFA® Excel Ultra Sharp Snap-Off Blade 9mm (10)





## OLFA® ABB50B – Excel Ultra Sharp Snap-Off Blade 9mm

OLFA® EXCEL BLACK™ takes blade sharpness to the next level. OLFA's secret, advanced production process makes this blade 25% sharper than Endurance™ blades. Not only do the blades last much longer than conventional blades, they give you clean cuts that show off the quality of your work. The 9mm EXCEL BLACK™ blade is 0.38mm thick and has 13 snap segments. Packed in boxes of 50.

Code	Description
BL-ABB50B	OLFA® Excel Ultra Sharp Snap-Off Blade 9mm (50)



## OLFA® L5 – X-Design 18mm Wheel Lock Snap-Off Cutter

The OLFA® X-Design™ has a very comfortable, anti-slip grip and fibreglass reinforced body. The L5 has a ratcheted wheel lock mechanism that secures the blade firmly in place and a hard metal pick on the end that can be used for opening cartons, and other tasks.

Code	Description
SC-L5	OLFA® X-Design 18mm Wheel Lock Snap-Off Cutter
<b>Compatible Blades</b>	
BL-LB10B	OLFA® Endurance Blade 18mm (10)

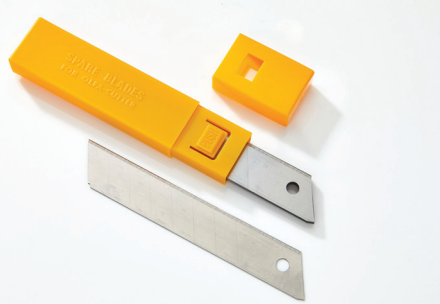


## OLFA® L1 – Multi Purpose Wheel Lock Snap-Off Cutter

The OLFA® L1 is a popular 18mm cutter, featuring an ABS plastic body, contoured to fit your hand comfortably and a ratcheted wheel lock mechanism that secures the blade firmly in place. The stainless steel blade channel will remain rust-free forever.



Code	Description
SC-L1	OLFA® Multi Purpose Wheel Lock Snap-Off Cutter
<b>Compatible Blades</b>	
BL-LB10B	OLFA® Endurance Blade 18mm (10)



OLFA® LB10B – Endurance Blade 18mm

OLFA® Endurance™ blades are made from high carbon tool steel (SK-2) and sharper than most other snap-off blades in the world. The blades are suitable for cutting through various types of heavy-duty materials.

Code	Description
BL-LB10B	OLFA® Endurance Blade 18mm (10)

 **BUY NOW**



OLFA® DC-5 – Advanced Handy Blade Disposal Case

The OLFA® DC-5 with belt clip is designed to make life easier, faster and safer for anyone who uses a Snap-Off cutter. To use the snap case, pull down the front flap, insert your snap-off cutter into the slot (with the blunt segment extended) and pull towards you to snap it off and let it fall safely inside. Once the case is full you can pull open the top flap and discard used blades safely, making the case ready to use again.

Code	Description
BL-DC5	OLFA® Advanced Handy Blade Disposal Case

 **BUY NOW**



Japanese Pro Stainless Steel Scissors

Professional scissors featuring precision ground, ultra-sharp blade, made from high quality, Japanese stainless steel. Heavy-duty, with a comfortable grip. Ideal for décor wallpaper finishing. Overall length 210mm.

Code	Description
AC-SCP8	Japanese Pro Stainless Steel Scissors

 **BUY NOW**

# 05 Vinyl Removal



*Scan here*

For more information  
on the product range  
and the latest pricing



OLFA® Mini Razor Edge Glass Scraper

OLFA® Professional Mini Glass Scraper supplied with 6 razor sharp durable stainless steel blades. The compact design features a comfortable anti-slip grip handle. A neat blade cassette retracts from the body to double up as a blade safety cover when not in use. Blade width 40mm.

Code	Description
AC-GSR2	OLFA® Mini Razor Edge Glass Scraper
Compatible Blades	
BL-GSB2S6B	OLFA® Endurance Blade 40mm x 18mm (6)

**BUY NOW**

**BUY NOW**



OLFA® X-Design Heavy Duty Scraper 300mm

The OLFA® XSR-300 is a heavy duty multi-purpose scraper that is built to last. The X-Design™ features a comfortable, anti-slip grip, and extremely durable construction. It features a quick blade replacement mechanism and a hammer safe end, for removal of even the most stubborn substrates. It has an easy clip-on blade cover. Supplied with one razor sharp blade. Blade width 100mm.

Code	Description
AC-XSR300	OLFA® X-Design Heavy Duty Scraper 300mm
Compatible Blades	
BL-BS10B	Replacement Blades for XSR Scraper 100mm x 18mm (10)

**BUY NOW**

**BUY NOW**



### Scraperite Tradesman Dwarf Scraper (6 Orange Blades)

Scraperite plastic blade holder, for use with Scraperite plastic razors. Supplied with 6 orange blades. Great little tool for effective removal of vinyl, adhesive and road traffic debris. Ergonomic design ensures comfort and precise handling. With a patent pending blade lock and release system that allows the blade to be securely held in the holder while allowing smooth release and ejection of the blade.

Code	Description
AC-SC-GT	Scraperite Tradesman Dwarf Scraper (6 Orange Blades)

**BUY NOW**



### Scraperite Lil Gripper Blades

Scraperite plastic razors in a variety of compounds to ensure clean removal of vinyl decals.

- Scraperite Plastic Razor Orange – General Purpose
- Scraperite Plastic Razor Blue – For use on Polycarbonate
- Scraperite Plastic Razor Yellow – For use on Acrylic
- Scraperite Plastic Razor Black – Heavy Duty

Code	Description
AC-SC-BL1	Scraperite 100 Orange Lil Gripper Blades (100)
AC-SC-BL2	Scraperite 100 Blue Lil Gripper Blades (100)
AC-SC-BL3	Scraperite 100 Yellow Lil Gripper Blades (100)
AC-SC-BL4	Scraperite 100 Black Lil Gripper Blades (100)

**BUY NOW**

# 06 Wrap Tools



*Scan here*

For more information  
on the product range  
and the latest pricing

# Wrap Tools

## Vehicle Gripper Wrap Magnets

These Vehicle Gripper Magnets are a must have for fitting vinyl wraps. Make the task easy by temporarily holding surplus film in place, and free up your hands while you work on the area being wrapped. The magnet features a removable handle which allows the graphic to be fully folded back and a rounded handle top which prevents indentations to the vinyl when lightly folded over. Supplied in packs of 2 and in a pack of 10.



Code	Description
AC-MAG	Vehicle Gripper Wrap Magnets 43mm (2)
AC-MAG-10	Vehicle Gripper Wrap Magnets 43mm (10)



## Channel Applicator Tools

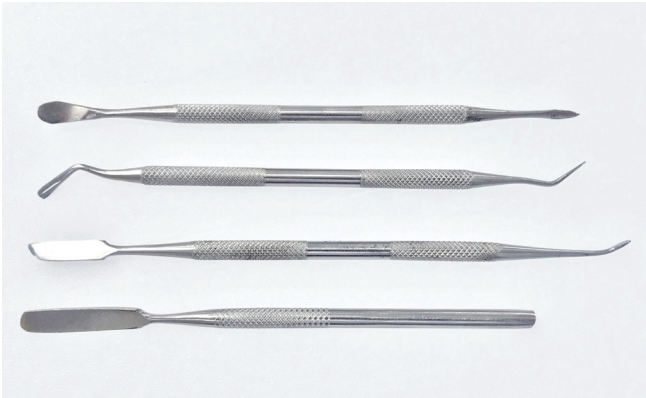
Deep Channel Applicator Roller Tool designed for fitting wraps into vehicle recesses. The rollers allow firm pressure to be applied evenly to the vinyl. Follow our wrap guidelines found on our website, that helps give guidance on wrap application into various channels. Choice of small or large applicator tools.

Code	Description
AC-CRS	Channel Applicator Roller Tool Small
AC-CRL	Channel Applicator Roller Tool Large



Rubber Trim Lifting Set

A set of metal tools to allow lifting of vehicle window rubber seals and trim. The four tools with a range of tips allow precise access, to lift rubber trim and tuck under vinyl films during the wrap process.



Code	Description
AC-RTL	Rubber Trim Lifting Set of 4 Tools

 **BUY NOW**



PID Pro Series Wrap Gloves

PROGLOVE car wrap gloves are specifically engineered to allow your hands to breathe, and can be used in high temperature vehicle vinyl wrap applications. Touch screen friendly with reinforced stitching in the valley of the index finger and thumb. Includes one pair (two gloves). Machine washable. Available in sizes L and XL.

Code	Description
AC-WGL	PID Pro Series Wrap Gloves L
AC-WGX	PID Pro Series Wrap Gloves XL

 **BUY NOW**

Metamark Wrap Gloves

Lightweight grey cotton Wrap Gloves with Metamark branding. Seamless finish, and antistatic. One Size, supplied as a pair. Ideal for everyday use.



Code	Description
AC-WGC	Metamark Wrap Gloves Grey

 **BUY NOW**

## Metamark Automotive Wheel Covers

Metamark Automotive branded wheel covers, provide protection of the wheel during detailing from overspray, plus prevents contamination during wrap or PPF Installation. Durable synthetic, one size fits [up to 21"] wheels. Set of 4.



Code	Description
AC-WCV	Metamark Automotive Wheel Covers (set of 4)



## Metamark Automotive Tool Belt

Metamark Automotive branded Tool Belt for the Wrap or PPF professional. One large compartment and 7 side pockets. Highly durable black synthetic fabric, with adjustable strap.

Code	Description
AC-WTB	Metamark Automotive Tool Belt



## Vehicle Badge Removal Tool

This tool allows car badges to be removed cleanly without risk of damage to the paintwork. Nylon cords are attached to the anodised metal handles. Replacement nylon sold separately.



Code	Description
AC-BRT	Badge Removal Tool
AC-BRTC	Badge Removal Tool Replacement Cords (20)



# 07 Knifeless / Filament Tapes



*Scan here*

For more information  
on the product range  
and the latest pricing



## 3M™ Knifeless Design Line Tape

With greater flexibility than Finish Line, the Design Line tape allows unique striping, accents and designs with sharp, clean edges. Flexible tape and filament is engineered to easily create highly contoured designs and leave a sharp, clean edge. Knifeless tape technology is designed to cut graphic film or other materials without a knife, eliminating the risk of nicks and cuts from a blade on the surface of the vehicle or substrate. 3.5mm x 50m.



Code	Description
AC-KDT	3M™ Knifeless Design Line Tape (50m)

## WrapCut™ Filament Tape

WrapCut™ is a filament wire tape for allowing precise profile cutting of vinyl wrap graphics without using knives on vehicles. The design prevents risk of damage to vehicle paintwork while trimming, as the filament wire is released safely up and away from the vehicle. The result is a smooth clean cut line, whether straight or profiled. Single sided, low tack. 3mm x 60m.



Code	Description
AC-WCS	WrapCut™ Filament Tape (60m)



## WrapCut™ Pro Filament Tape

WrapCut™ Pro features a tackier, slightly wider and stiffer tape enabling easier, long straight lines than the standard WrapCut™ product. The significant increase in adhesive strength permits positive attachment to difficult surfaces and creates instant tack to the surface but lifts cleanly and easily for repositioning. Single sided medium tack. 4mm x 45.7m.



Code	Description
AC-WCP	WrapCut™ Pro Filament Tape (45.7m)

# 08 Thermal Devices



*Scan here*

For more information  
on the product range  
and the latest pricing

## Steinel HG 2120E Wrapping Heat Gun

The Steinel HG 2120E is a professional quality heat gun ideally suited to vehicle wraps. This premium branded tool has a range of features suited to vehicle wrap application, ensuring carefully controlled heat can be applied. Add the optional Steinel HL Scan thermometer to give a digital readout of surface temperature. This Steinel model features 2200w power, for temperatures between 80°C up to a maximum 630°C via a thumbwheel display. It has a 3 stage blower from 150-500 l/min. It comes with the longer 7.5m flex cable and UK 13a plug. Buying from Metamark extends the standard manufacturer 1 year warranty to 2 years.



## Steinel Infra-Red Thermometer

The Steinel HL Scan digital thermometer is designed for use with the HG 2120E. Packed with features, the HL Scan is a high quality unit that assures precision surface temperature control while heating and post heating of vinyl graphics. The display and audible alert notifies if the surface temperature is above or below the desired input temperature. Buying from Metamark extends the standard manufacturer 1 year warranty to 2 years.



Code	Description
AC-H2120E	Steinel HG 2120E Wrapping Heat Gun



Code	Description
AC-HTS	Steinel Infra-Red Thermometer



## Budget Infra-Red Thermometer

This budget laser thermometer features an LCD display in F or °C, and set temperature range of measuring between 50-380°C. It features an audible power off, and the LCD has an optional backlight.



Code	Description
AC-HTB	Budget Infra-Red Thermometer



# 09 PPF Tools



*Scan here*

For more information  
on the product range  
and the latest pricing



*Paint Protection  
Film Tools*



### Metamark APE PPF Slip Concentrate 1 litre

Metamark APE Slip Solution allows optimal glide for installation of Metamark M-PPF® Paint Protection Films. This concentrate should be diluted up to 50ml per litre of distilled water, making up in excess of 20 litres from one bottle. The measuring aid in the 1 litre bottle allows control when dispensing. The product is fully biodegradable, skin-friendly, clinically tested and pH-neutral.

Code	Description
AC-SPPF	Metamark APE PPF Slip Concentrate 1 litre



### Metamark APE Duo Purple PPF Squeegee

Metamark APE Duo Purple is a professional squeegee for use with Metamark M-PPF® Paint Protection Films. Designed by APE, this trapezoidal squeegee has a two-layer construction. The top surface provides stability, while the base layer is a soft compound. It is designed to be comfortable to work with and give flexibility, and for use with wet application. Edges provide 30°, 45° and 90° to allow different pressure to be applied during squeegeeing. The Metamark APE Duo is the perfect application partner for use with Metamark APE Slip Solution.

Code	Description
SQU-APE1	Metamark APE Duo Purple PPF Squeegee





## Metamark High Pressure Pump Sprayer 1 litre

This is a professional quality, high pressure pump sprayer. The pump simply requires priming a few times and is then ready for use. The pump delivers a much higher volume of fluid from its canister than can be achieved with a standard spray, making it the ideal partner for PPF installation. Keep one for Slip Solution and another for Tack Solution.

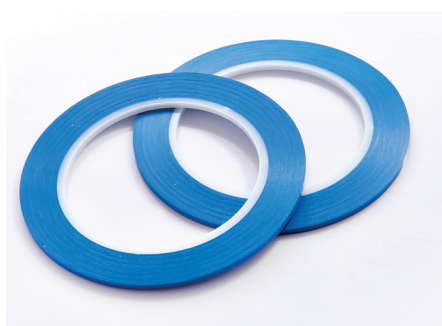
Code	Description
AC-WP	Metamark High Pressure Pump Sprayer 1 litre



## Metamark Surface Cleaner

The best single action cleaner you will ever use! Metamark Surface Cleaner cuts through mild grease or silicone, road film and other contaminants to leave a highly cleaned vinyl-ready surface. This highly effective, user-friendly, go-to product can be used on its own or as part of a multi-step cleaning process, on vehicle panels, glass or trim. Apply with clean lint free microfibre cloth. Supplied in spray gun. Packed individually, 4 or 12 pack.

Code	Description
AC-SSC	Metamark Surface Cleaner 1 litre
AC-SSC-4	Metamark Surface Cleaner 1 litre (Box of 4)
AC-SSC-12	Metamark Surface Cleaner 1 litre (Box of 12)



## FineLine Blue Tape 3mm x 33m

A high quality self adhesive tape for PPF installation. The tape helps prevent the blade from touching the bodywork, and can be removed without leaving any residue. An alternative method is to use the tape to guide a free hand cutting edge, by applying the tape on top of the PPF film. It is always advised to only score PPF film and not cut through the film onto the vehicle.

Code	Description
AC-FLT3	FineLine Blue Tape 3mm x 33m



## Metamark PPF Squeegee Black

Flexible TPU squeegees for PP or Window Film installation. Medium firmness confirms well to body panels. Profiled leading edge. Available in two sizes, 65mm or 100mm width, 75mm depth.



Code	Description
SQU-PPF1	Metamark PPF Squeegee Black 65mm
SQU-PPF2	Metamark PPF Squeegee Black 100mm



# 10 Automotive Detailing



*Scan here*

For more information  
on the product range  
and the latest pricing



### Automotive Ceramic Coating

Professional use Ceramic Coating for use with PVC Wrap or PPF Films. This flexible SiO<sub>2</sub> coating is hydrophobic, creating water beading, and provides UV resistance. One hour cure time, and up to 18 months protection. Suitable for matt and gloss finishes. Covers two medium size cars. Application pad included.



Code	Description
AC-CCX	Automotive Ceramic Coating

### Automotive Ceramic Detailer

Sprayable ceramic detailer, for use with Wrap and PPF Films, as an end user aftercare product. Safe for use on glass, plastics, alloys, steel and rubbers. Contains SiO<sub>2</sub>, it is hydrophobic to provides water beading, and gives UV resistance. Offers up to 3 months durability. High gloss finish.

Code	Description
AC-CDL	Automotive Ceramic Detailer 300ml





## Automotive Ceramic Foam

Aftercare product, to give a protective coating with SiO<sub>2</sub>. Hydrophobic protection creates water beading adds gloss to your vehicle. Up to 6 months of protection. Apply with a foam lance, then rinse.

Code	Description
AC-CFM	Automotive Ceramic Foam 500ml



## Automotive Snow Foam

Foam detergent with powerful cleaning agents. pH neutral and safe to use on ceramic coatings. Dilute 1 part to 100 with clean water. Apply Snow Foam using a foam lance, then rinse, leaving no streaks or smears.



Code	Description
AC-CSF	Automotive Snow Foam 5 Litre



## Automotive Auto Wash 500ml

Aftercare with high concentration professional strength car shampoo. Safe to use on ceramic coatings, waxes, and sealants, pH neutral. Tough on dirt and grime. High foaming formula lubricates contaminants. High concentrate – 1500:1.

Code	Description
AC-CAW	Automotive Auto Wash 500ml



## Automotive Aftercare Kit

This aftercare kit comprises Ceramic Foam (500ml), Auto Wash (500ml), Ceramic Detailer (300ml), and includes a microfibre cloth. The kit is ideal to offer the vehicle owner an ongoing care package for their vehicle.

Code	Description
AC-CCK	Automotive Aftercare Kit

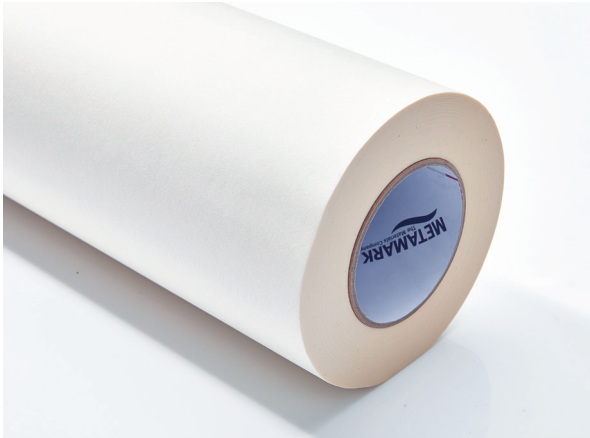


# 11 Application Tapes



*Scan here*

For more information  
on the product range  
and the latest pricing



## Metamark M2000 – Standard High Tack Paper Application Tape

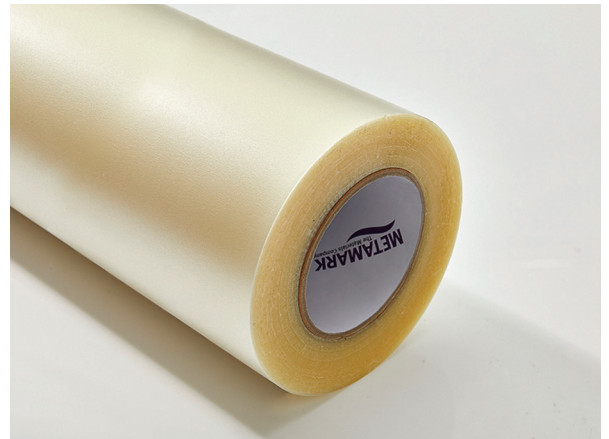
Metamark M2000 is a proven high quality paper application tape suited to most signmaking needs. The tape unwinds easily from the roll and tears cleanly. The tape has been formulated to match the Metamark SignVinyl range as well as Speciality Materials and is recommended for most general need including wet application.

Code	Description
<b>PT1220H</b>	Metamark M2000 – Standard High Tack Paper Application Tape 1220mm x 100m
<b>PT610H</b>	Metamark M2000 – Standard High Tack Paper Application Tape 610mm x 100m

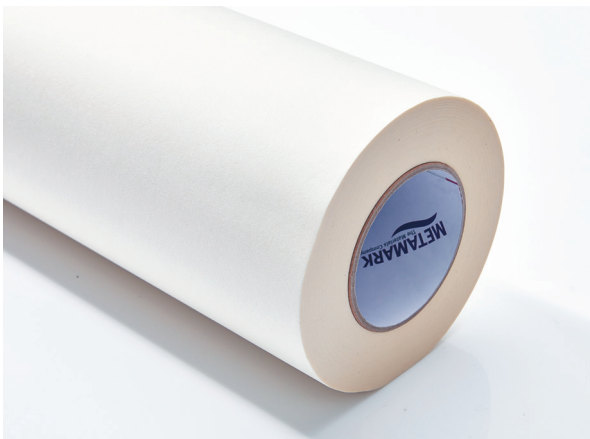


## Metamark M2060 – Standard Tack Clear Application Tape

Metamark M2060 is a transparent polypropylene application tape, allowing easy alignment whilst overlaying complex, multi-coloured graphics from cut components. It offers excellent visibility to the composite graphic underneath during use and is resistant to stretching which makes colour-to-colour registration much easier to maintain and layouts more accurate.



Code	Description
<b>PT1220T</b>	Metamark M2060 – Standard Tack Clear Application Tape 1220mm x 100m
<b>PT610T</b>	Metamark M2060 – Standard Tack Clear Application Tape 610mm x 100m



## Metamark M2100 MetaTear™ – Standard High Tack Paper Application Tape

Metamark M2100 MetaTear™ is a high quality standard high tack paper application tape, suited to general sign applications. MetaTear™ technology offers a clean paper tear to make for faster working. It is designed to work well with a wet application method, with no stringing of the adhesive, and provides a clean tear for fast workability.



Code	Description
<b>PT1220M</b>	Metamark M2100 MetaTear™ – Standard High Tack Paper Application Tape 1220mm x 100m

## R Tape 4075 Conform® – Standard High Tack Paper Application Tape

A standard high tack paper application tape suitable for most signmaking applications which also benefits the presentation and shipping of finished graphics to the customer or application site. R Tape 4075 Conform® benefits from a novel adhesive technology which allows it to adhere releasably to silicone such as exposed areas of liner. It resists tunnelling and edge curling when applied and it is perfect for the preparation of graphics that need to be dispatched for third party application. R4075 is suitable for wet application too.



Code	Description
<b>T1520H</b>	R Tape 4075 Conform® – Standard High Tack Paper Application Tape 1520mm x 100m
<b>T1220H</b>	R Tape 4075 Conform® – Standard High Tack Paper Application Tape 1220mm x 100m
<b>T610H</b>	R Tape 4075 Conform® – Standard High Tack Paper Application Tape 610mm x 100m



## R Tape ApliTape™ – Standard High Tack Paper Application Tape

A standard high tack paper application tape, R Tape ApliTape™ is a high quality product suited to general sign and graphic applications. R Tape's products have long been recognised among other leading application tapes in the sign industry. ApliTape™ is designed to work well with a wet application method but must be removed before dry. The product exhibits no stringing and delivers a clean tear in use. R Tape ApliTape™ is supplied in 1220mm x 91.4m rolls.

Code	Description
<b>T1220A-91</b>	R Tape ApliTape™ – Standard High Tack Paper Application Tape 1220mm x 91.4m
<b>T610A-91</b>	R Tape ApliTape™ – Standard High Tack Paper Application Tape 610mm x 91.4m



## R Tape 4050 Conform® – Low Tack Paper Application Tape

A low tack paper application tape, R Tape 4050 Conform® allows easier release of larger graphics and those with high gloss levels and is also suitable for lifting printed graphics without the risk of damaging the print. The product has the benefits of the Conform® adhesion technology which adheres to exposed silicone and is suitable for wet application.



Code	Description
<b>T1520L</b>	R Tape 4050 Conform® – Low Tack Paper Application Tape 1520mm x 100m
<b>T1220L</b>	R Tape 4050 Conform® – Low Tack Paper Application Tape 1220mm x 100m
<b>T610L</b>	R Tape 4050 Conform® – Low Tack Paper Application Tape 610mm x 100m





## R Tape 4761RLA® Conform® – Medium High Tack Paper Application Tape

R Tape 4761RLA® Conform® is a premium grade, medium high tack application tape with a heavyweight saturated paper. Designed to aid the transfer and installation of small and large graphics, 4761 protects graphics printed with UV screen print inks and clear coats. Perfect for use with MetaScape® and MetaGlide® products. The Conform® technology in release liner adhesion resists tunnelling and edge curling, so is ideal for the preparation of graphics that need to be despatched for third party application.

Code	Description
T1220LF	R Tape R4761RLA Conform® – Medium High Tack Paper Application Tape



## R Tape 4775 Conform® – Premium Grade Paper Application Tape

A premium grade high tack application tape with a heavyweight saturated paper, R Tape 4775 Conform® has improved resistance to ambient moisture thus ensuring consistent layout performance. It has a higher tack than the R4075 or M2000 tapes so is ideally suited for use with embossed vinyl, or intricate details. The product also features Conform® adhesive technology which adheres to exposed silicone liners.



Code	Description
T1220VT	R Tape 4775 Conform® – Premium Grade Paper Application Tape 1220mm x 100m
T610VT	R Tape 4775 Conform® – Premium Grade Paper Application Tape 610mm x 100m



## R Tape 4885 Conform® – Extra High Tack Paper Application Tape

An extra high tack heavyweight paper application tape, R Tape 4885 Conform® is suitable for use with even the most demanding, hard to lift materials, such as frosted etch effect vinyl. The product also benefits from Conform® adhesion which adheres to exposed silicone liners without tunnelling.



Code	Description
T1220XT	R Tape 4885 Conform® – Extra High Tack Paper Application Tape 1220mm x 100m
T610XT	R Tape 4885 Conform® – Extra High Tack Paper Application Tape 610mm x 100m

# 12 Double Sided Tapes



*Scan here*

For more information  
on the product range  
and the latest pricing

# Metamark **UHB** and High Performance Engineered Tapes

Metamark double sided tapes are engineered to ensure the highest performance across a wide range of applications. The product is manufactured in the UK. These double sided tapes provide an alternative to mechanical fixings, offering quick, clean and easy installation.



## Metamark UHB Series

Ultra High Bond Tapes.

UHB Tapes offer a structural bond. The 'Sign makers tape', for bonding channels and extrusions.

**UHB1 Clear UHB Tape**  
**UHB4 Grey UHB Tape**



## Metamark VS Series

Ultra High Bond Tapes.

High performance thin filmic double coated tapes. For fixing name plates, banner hemming and use on smooth flat surfaces.

**VS1 Clear PET Tape**  
**VS2 White PVC Tape**



## Metamark HF Series

High Performance Foam Tapes for indoor and outdoor use.

The foam core is forgiving on many surfaces and ideal for POS and exhibition.

**HF2 White Foam Tape**  
**HF3 Black Foam Tape**

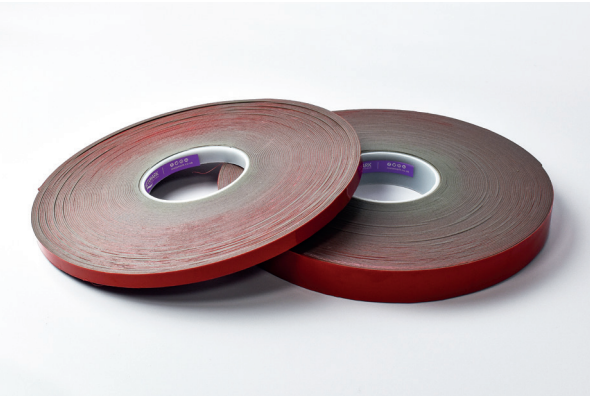
*Metamark Engineered Tapes.  
UK Manufactured.*

UHB1 Ultra High Bond Double Sided Clear Gel Tape

The UHB Series are our Ultra High Bond tapes. The UHB1 is a clear gel core type tape supplied on a red liner. The UHB tapes are structural tapes owing to the ultra-high bond adhesive throughout the core. It is a highly versatile general purpose ultra-clear tape. Metamark brings this premium technology at an everyday price. Thickness 1mm.



Code	Description
T-UHB1-12	Metamark UHB1 Ultra High Bond Tape Clear (33m) 12mm
T-UHB1-24	Metamark UHB1 Ultra High Bond Tape Clear (33m) 24mm



UHB4 Ultra High Bond Double Sided Grey Foam Tape

The UHB Series are our Ultra High Bond tapes. The UHB4 is a grey foam core type tape supplied on a red liner. The UHB tapes are structural tapes owing to the ultra-high bond adhesive throughout the core. This specification of tape has become known as ‘sign makers tape’, for its all round performance. Metamark brings this technology at a price that allows everyday use. Thickness 1.2mm.

Code	Description
T-UHB4-12	Metamark UHB4 Ultra High Bond Tape Grey (33m) 12mm
T-UHB4-24	Metamark UHB4 Ultra High Bond Tape Grey (33m) 24mm



VS1 Double Sided Clear PET Tape

The VS Series are our High Performance double sided filmic tapes. The VS1 is a clear PET high bond tape supplied on a red liner. It is ideal for PVC banner hemming and as a general sign making tape. This is a great everyday product to make quick and low cost banners.



Code	Description
T-VS1-24	Metamark VS1 Banner Tape PET Clear (50m) 24mm
T-VS1-24-6	Metamark VS1 Banner Tape PET Clear (50m) 24mm (Box of 6)
T-VS1-38	Metamark VS1 Banner Tape PET Clear (50m) 38mm
T-VS1-38-4	Metamark VS1 Banner Tape PET Clear (50m) 38mm (Box of 4)



## VS2 Double Sided White PVC Tape

The VS Series are our High Performance double sided filmic tapes. The VS2 is a white PVC high bond tape supplied on an amber liner. It is an ideal sign tape for smooth flat applications such as name plates, for bonding PVC and a wide range of indoor and outdoor installations.



Code	Description
<b>T-VS2-12</b>	Metamark VS2 Tape PVC White (50m) 12mm
<b>T-VS2-24</b>	Metamark VS2 Tape PVC White (50m) 24mm
<b>T-VS2-24-6</b>	Metamark VS2 Tape PVC White (50m) 24mm (Box of 6)



## HF2 Double Sided White Foam Tape

The HF Series are our High Performance Foam tapes. This is a great everyday foam tape available in white or black and has a good initial tack. The 1mm foam is supplied on an amber liner. General purpose indoor and outdoor low cost foam tape.

Code	Description
<b>T-HF2-12</b>	Metamark HF2 Foam Tape White (50m) 12mm
<b>T-HF2-24</b>	Metamark HF2 Foam Tape White (50m) 24mm



## HF3 Double Sided Black Foam Tape

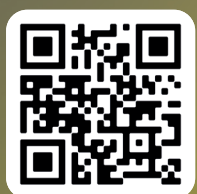
The HF Series are our High Performance Foam tapes. This is a great everyday foam tape available in white or black and has a good initial tack. The 1mm foam is supplied on an amber liner. General purpose indoor and outdoor low cost foam tape.



Code	Description
<b>T-HF3-12</b>	Metamark HF3 Foam Tape Black (50m) 12mm
<b>T-HF3-24</b>	Metamark HF3 Foam Tape Black (50m) 24mm



# 13 Miscellaneous Tapes



*Scan here*

For more information  
on the product range  
and the latest pricing

## Masking Tape

Scapa 9080S is coated with an aggressive rubber/resin solvent based adhesive system and recommended for all general purpose applications. Features include clean removal at room temperature, with smooth and controlled unwind. The tape is flexible and conformable, with good peel adhesion, shear and holding strength. It is resistant to mild chemicals, lacquers, solvents and water.



Code	Description
<b>MT25MASK</b>	Masking Tape Scapa 9080S 25mm
<b>MT25MASK-36</b>	Masking Tape Scapa 9080S 25mm (36)
<b>MT50MASK</b>	Masking Tape Scapa 9080S 50mm
<b>MT50MASK-24</b>	Masking Tape Scapa 9080S 50mm (24)



## Hook and Loop Tape

Self-adhesive Hook and Loop tape for interior applications. An everyday alternative to Velcro®. Available in Black or White and supplied 20mm x 25m. Great for exhibition use as an alternative to mechanical fasteners.

Code	Description
<b>T-VHW</b>	HookNLoop Tape – Hook White 20mm x 25m
<b>T-VLW</b>	HookNLoop Tape – Loop White 20mm x 25m
<b>T-VHK</b>	HookNLoop Tape – Hook Black 20mm x 25m
<b>T-VLK</b>	HookNLoop Tape – Loop Black 20mm x 25m



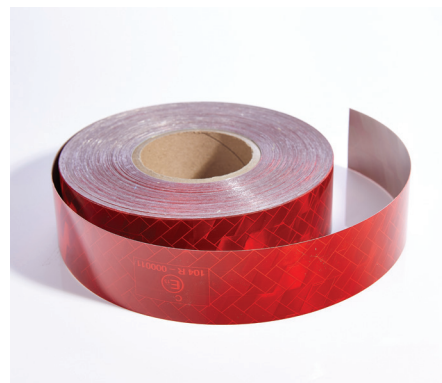
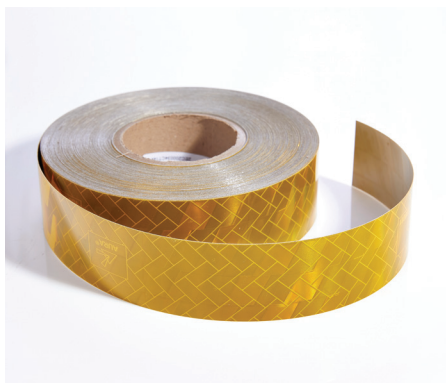
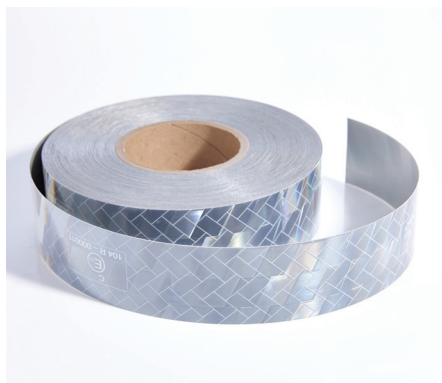
## Magnetic Tape

A self-adhesive magnetic tape for pop up exhibition stands. Supplied in the industry standard width of 12.7mm, the Type A product is the default version with the common polarity used on most installations. The Type B is the reverse polarity. Supplied 30m roll.



Code	Description
<b>T-MV12</b>	Magnetic Tape (30m) 12.7mm MAG A
<b>T-MV12-B</b>	Magnetic Tape (30m) 12.7mm MAG B





## AURA® 144 – High Intensity Prismatic Conspicuity Tape ECE-104 Class C

AURA® 144 High Intensity Micro Prismatic Conspicuity Tape meets Regulation ECE-104 Class C, for the requirement of outlines onto the rear and sides of HGVs over 7.5 tonnes and trailers over 3.5 tonnes. Up to 7 years durability. The metallised single layer construction avoids the need for edge sealing compared to other prismatic films.

Code	Description
<b>MRF-144-00</b>	AURA® 144 Prismatic White 50mm x 50m
<b>MRF-144-01</b>	AURA® 144 Prismatic Yellow 50mm x 50m
<b>MRF-144-02</b>	AURA® 144 Prismatic Red 50mm x 50m



## Social Distancing Tape

This black and yellow vinyl tape has the wording PLEASE KEEP A SAFE DISTANCE already printed on it, along with a 500mm distance indicator message. The product is scuff resistant and easy to clean. It can be used for internal areas to mark out safe distancing, including use in work areas or retail. Sold individually or boxed in 36 rolls. 48mm x 33mm.

Code	Description
<b>T-SDT</b>	Social Distancing Tape 48mm x 33mm
<b>T-SDT-36</b>	Social Distancing Tape 48mm x 33mm (Box of 36)



# 14 Banner Finishing



*Scan here*

For more information  
on the product range  
and the latest pricing

BFS SmoothEdge Banner Tape – Single Sided White

SmoothEdge Banner Tape is a premium banner finishing reinforcement tape. Making banner finishing simple. No need for folding, hemming, sewing or welding. This semi rigid white PE tape ensures a perfect flat edge and the single sided, liner-free design makes it quick to use. 40mm x 25m.

Code	Description
T-BFS	Banner Finishing Smooth-Edge Tape (25m) 40m



BFX EDGE-It® Banner Tape – Single Sided Weave

EDGE-It® Banner Tape is a synthetic weave type reinforcement tape. Making banner finishing quick and easy, no need for folding, hemming, sewing or welding. This polyester weave tape can be used with PVC or Mesh Banner material. The single sided design makes it quick to use.

Code	Description
T-BFX	Banner Finishing EDGE-It® Tape (25m) 40mm



VS1 Double Sided Clear PET Tape

The VS Series are our High Performance double sided filmic tapes. The VS1 is a clear PET high bond tape supplied on a red liner. It is ideal for PVC banner hemming and as a general sign making tape. This is a great everyday product to make banners quick and low cost to produce.



Code	Description
T-VS1-24	Metamark VS1 Banner Tape PET Clear (50m) 24mm
T-VS1-24-6	Metamark VS1 Banner Tape PET Clear (50m) 24mm (Box of 6)
T-VS1-38	Metamark VS1 Banner Tape PET Clear (50m) 38mm
T-VS1-38-4	Metamark VS1 Banner Tape PET Clear (50m) 38mm (Box of 4)



Application Rollers

Application rollers for banner hemming, wall décor overlaps, and general sign application. These premium grade rollers are made from silicon to give a smooth consistent application. They are made of a durable construction.

Code	Description
AC-RS45	Silicon Application Roller 45mm
AC-RS95	Silicon Application Roller 90mm



# 15 Roller Display Stands



*Scan here*

For more information  
on the product range  
and the latest pricing



DS-200 Compact Roller Banner Stands

The DS-200 Series is our everyday compact banner stand, available in a range of 3 sizes. It's a tried and tested product. Roller banner stands have become the popular marketing product for a cost effective way to create quick temporary displays. Features a gripper top hanger. Visible Graphic Height 2000mm. Each supplied in a zip bag, The 1000mm model also features a padded bag.

Code	Description
DS-200-80	Roller Banner Stand 800mm
DS-200-85	Roller Banner Stand 850mm
DS-200-100	Roller Banner Stand 1000mm



DS-400 Premium Roller Banner Stand

The DS-400 Series is a premium banner stand featuring a heavy base, gripper top hanger and telescopic poles. Visible Graphic Height 2000mm. Supplied in a padded bag.

Code	Description
DS-400	Premium Roller Banner Stand 800mm



# 16 Vinyl Plotter Cutting Blades



*Scan here*

For more information  
on the product range  
and the latest pricing



## Metamark Vinyl Plotter Cutting Blades

*OEM Compatible. Tungsten Carbide.*

### Summa D Series Compatible Cutter Blades

Precision tungsten carbide cutter blades for SummaCut D Series plotters. Supplied 36° as standard for general vinyl use, the 60° is for thicker materials. The D Series is for the SummaCut Drag cutters.

Code	Description
<b>TC110-30</b>	Cutter Blade 36° Summa D Series
<b>TC110-30-5</b>	Cutter Blade 36° Summa D Series (5)
<b>TC110-60</b>	Cutter Blade 60° Summa D Series



### Summa T Series Compatible Cutter Blades

Precision tungsten carbide cutter blades for SummaCut T Series plotters. Supplied 36° as standard for general vinyl use, the 60° is for thicker materials. The T Series is for SummaCut Tangential cutters.

Code	Description
<b>TC112-30</b>	Cutter Blade 36° Summa T Series
<b>TC112-30-5</b>	Cutter Blade 36° Summa T Series (5)
<b>TC112-60</b>	Cutter Blade 60° Summa T Series





## Mimaki Compatible Cutter Blades

Precision tungsten carbide cutter blades for Mimaki CG vinyl plotters. Supplied 45° as standard for general vinyl use, the 60° is for thicker materials.

Code	Description
<b>TC80-45</b>	Cutter Blade 45° Mimaki
<b>TC80-45-5</b>	Cutter Blade 45° Mimaki (5)
<b>TC80-60</b>	Cutter Blade 60° Mimaki



## Graphtec Compatible Cutter Blades

Precision tungsten carbide cutter blades for all Graphtec CE vinyl plotters as a replacement for the CB09 blade and includes replacement spring. Supplied 45° as standard for general vinyl use.



Code	Description
<b>TC120-45</b>	Cutter Blade 45° Graphtec
<b>TC120-45-5</b>	Cutter Blade 45° Graphtec (5)



## Roland Compatible Cutter Blades

Precision tungsten carbide cutter blades for Roland CAMM-1 vinyl plotters and Printer / Cutter Wide Format Printers. Supplied 45° as a replacement for the Roland ZEC-U1005 for standard vinyl use and 60° as a replacement for the ZEC-U3050 for thicker materials.

Code	Description
<b>TC30-45</b>	Cutter Blade 45° Roland
<b>TC30-45-5</b>	Cutter Blade 45° Roland (5)
<b>TC30-60</b>	Cutter Blade 60° Roland



# 17 Colour Matching Guides



*Scan here*

For more information  
on the product range  
and the latest pricing



### Pantone® Formula Guide Pack

Industry standard Pantone® Formula Guides, this two swatch pack of Coated and Uncoated selections includes 294 new trend colours. The colour reference tool used around the world for inspiration, specification and accuracy in print and digital design. The guides also provide colour formulations for properly mixing all Pantone Spot colour inks.

Code	Description
PANT-GP1601A	Pantone® Formula Guide GP1601A Coated and Uncoated Twin Pack



### RAL K7 Classic Colour Matching Guide

The RAL K7 is the compact version of the RAL colour matching guides. The chart is 50 x 150mm in size and contains all 213, four digit, RAL Classic colours, with every page containing five 20 x 50mm gloss colour samples.



Code	Description
Z-RAL	RAL K7 Classic Colour Matching Guide

## **Metamark. The Materials Company**

Metamark is trusted worldwide and specified by leading brands. It is chosen by sign and graphics producers looking for quality, technical leadership and value. Metamark media and materials are seen everywhere there's business to promote, messages to communicate and quality to maintain.

With Metamark's Wrap Tools Accessories, you can trust in the continued high-quality performance Metamark is known for, and with a range of products at affordable prices.

## **Customer Satisfaction and Value**

We build relationships and we're prepared to listen, so we ensure our products and services better reflect your needs and requirements. We manage every element of your experience in working with us, from product performance to state of the art order processing.



UK: 0345 345 5645

Email: [sales@metamark.co.uk](mailto:sales@metamark.co.uk)

### **Metamark (UK) Limited**

Luneside, New Quay Road, Lancaster, LA1 5QP, UK  
Metamark House, Genesis Business Park, Woking, GU21 5RW, UK

[www.metamark.co.uk](http://www.metamark.co.uk)

## **Performance you can trust**