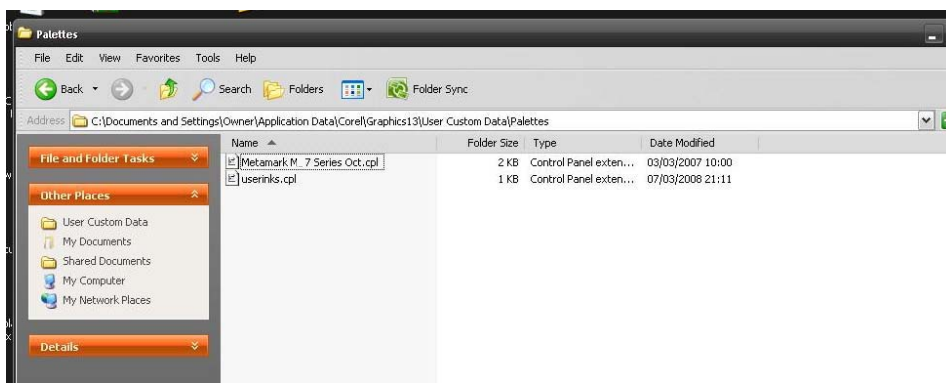


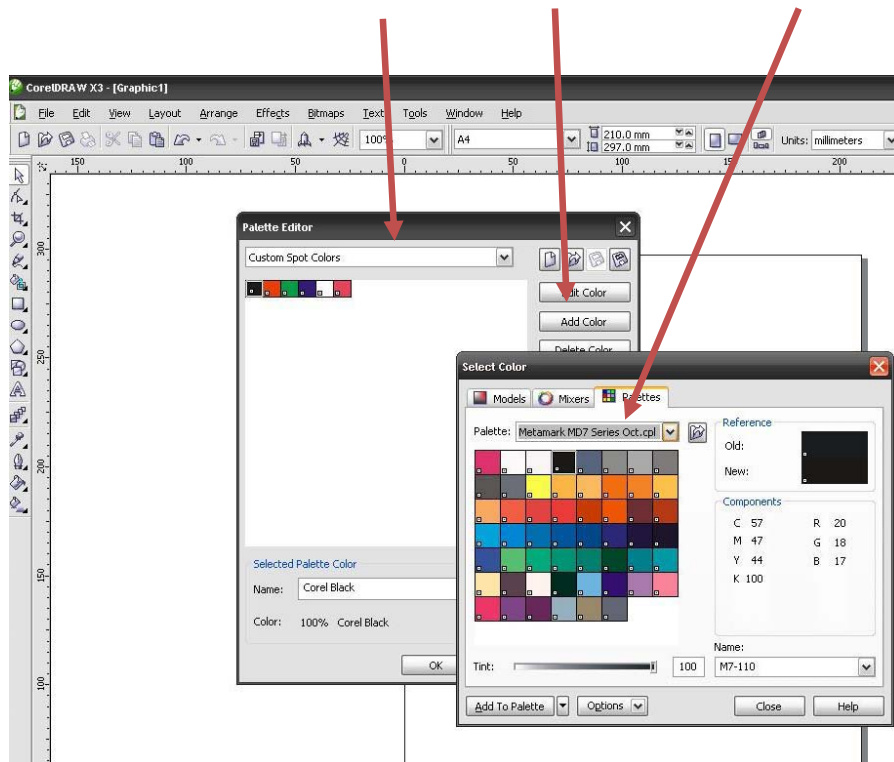
Installation Instructions for Corel Metamark 7 Series Colour Palettes

Corel Draw. This method allows both the name and CMYK value to be imported.

With Corel closed, copy the file **Metamark M7 Series ..cpl** to the folder C:\Documents and Settings\YOURNAME\Application Data\Corel\Graphics13\User Custom Data\Palettes.



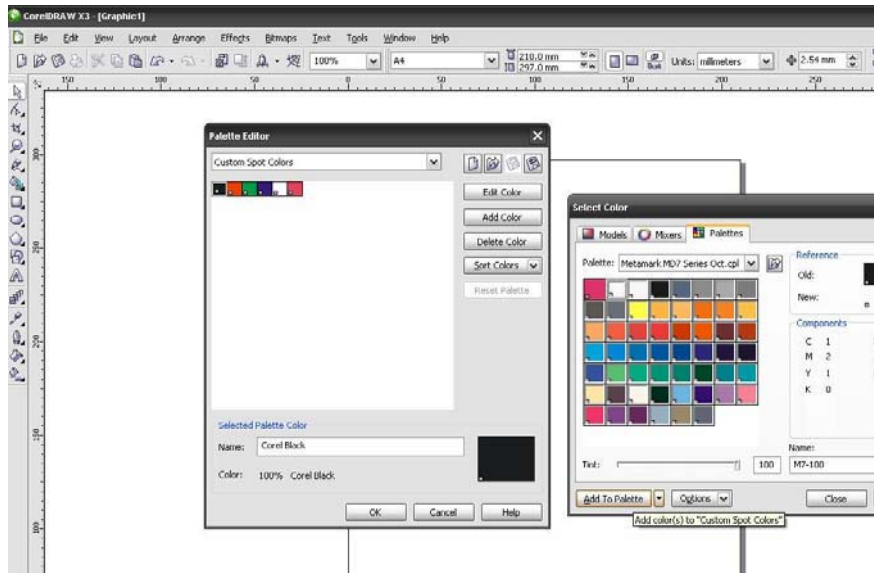
Go to TOOLS-PALETTE EDITOR and select CUSTOM SPOT COLOURS. Click ADD COLOR and select the Metamark Palette



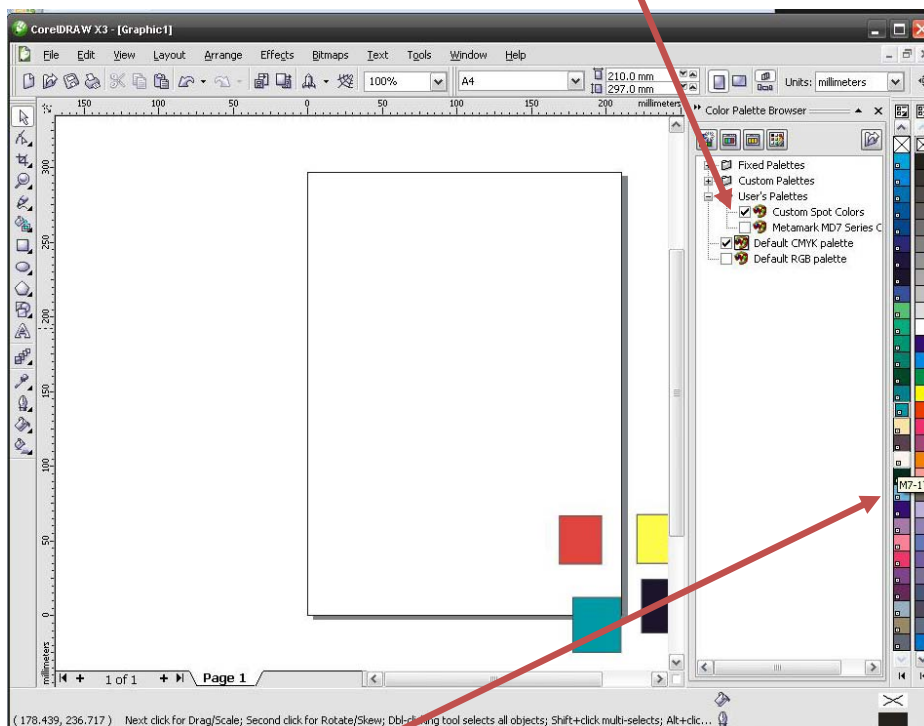
Metamark (UK) Limited

Highlight the first colour in the top left corner, hold down the shift key and select the bottom right colour. This should select all the colours.

Click on ADD TO PALETTE and this should transfer the colours to the CUSTOM PALETTE.



Go to WINDOW-COLOUR PALETTES-COLOUR PALETTE BROWSER. Tick CUSTOM SPOT COLOURS and this should open the palette next to the default palette



The name and CMYK settings should now work correctly.

Metamark (UK) Limited