

"Flexi 8 family allows you to design directly with all METAMARK Sign Vinyl colours. Chose or analyse a colour and pick the match as a METAMARK product. You will see the colours as you design, so you can create the most powerful effects using the best sign design & production software in the world. Flexi8 then allows you to create a PDF proof and email straight to your customer, for them to pass, before you use any materials. Now! you can cut and produce the result they expect."

How to install METAMARK colour libraries into FLEX 6/7/8 v1 family

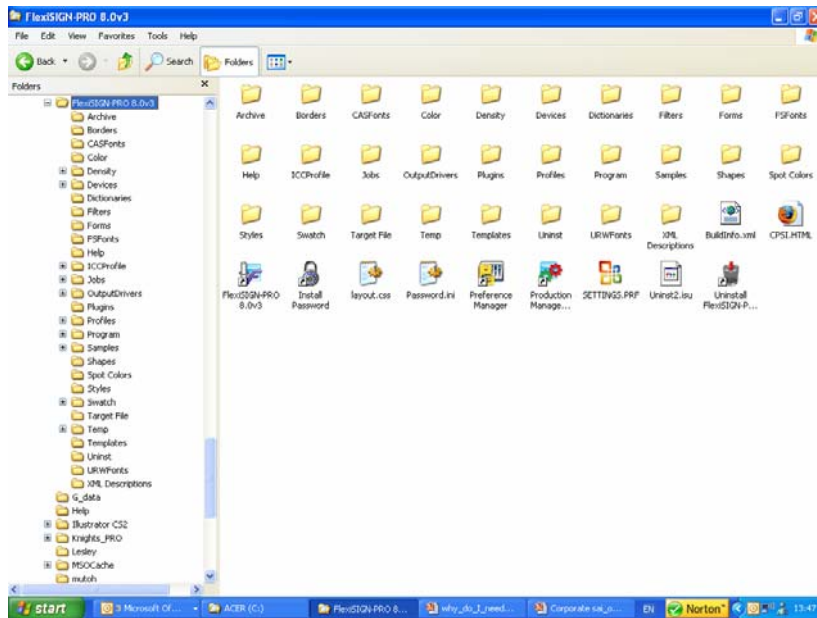
Action: You need to copy the .slb files into a new folder you must create (called Metamark) in Flexi's Library folder

To do this in PC windows

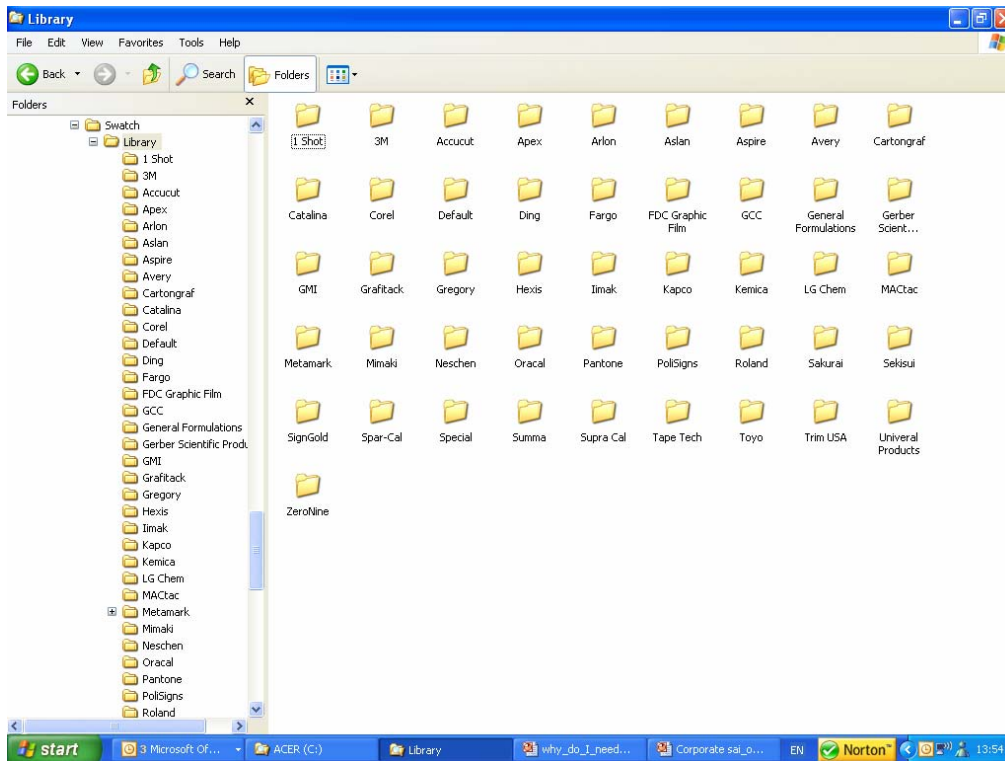
1. Close Flexi if it is running.
2. Find where your Flexi, has been installed on your computer in the folder structure in windows in Explorer.

For example;

C:\Program Files\FlexiSIGN-PRO 8.1v1

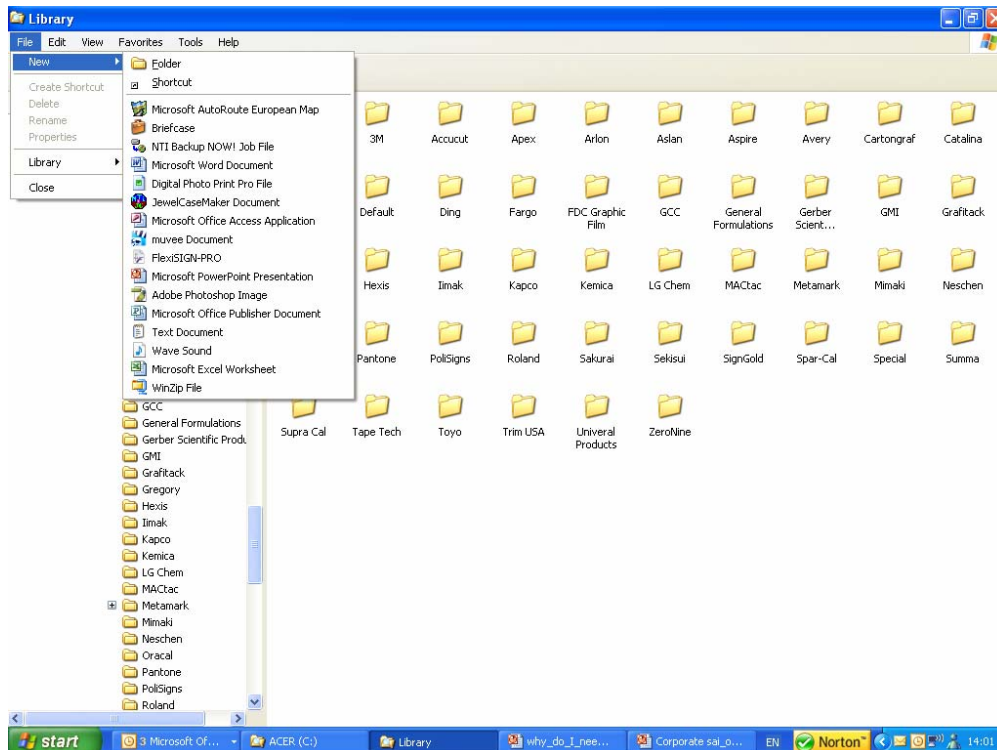


3. Find SWATCHES and double click.
4. Then double click on LIBRARY to show all product folders.



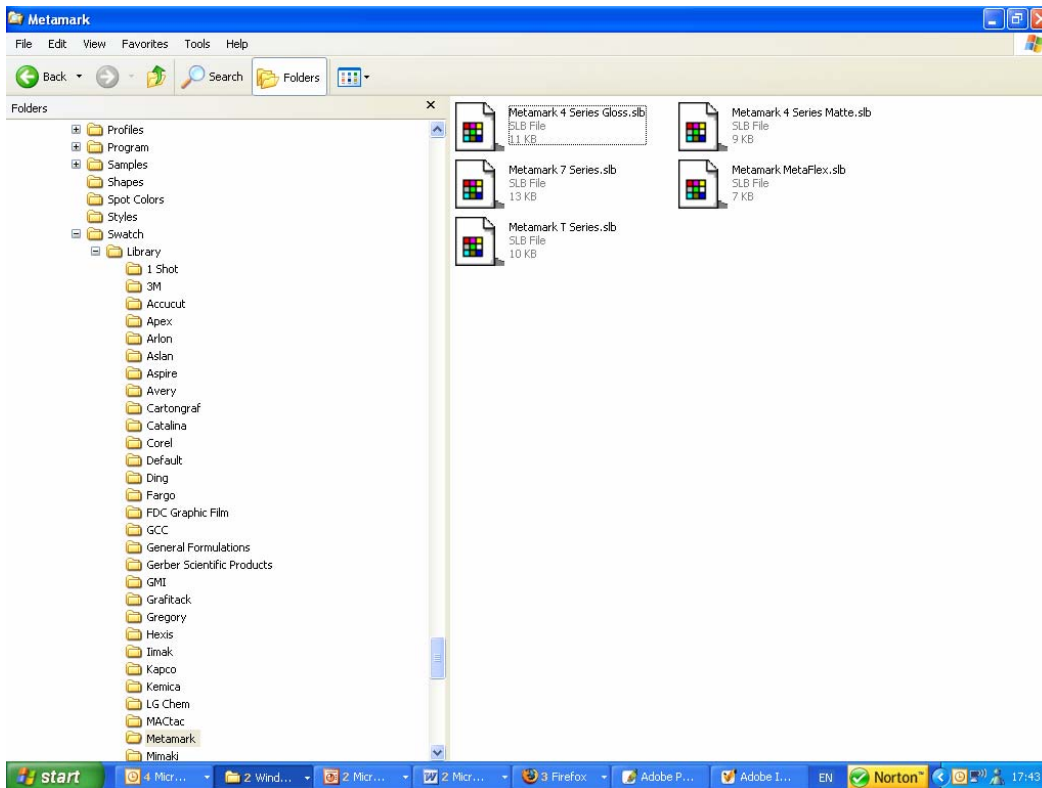
5. You need to make a new folder called **Metamark**.

6. To do this, click to highlight on **Library** sub folder and now go to **File** and click, then **New**, move across and click **Folder**. This will create a new folder.



7. Now, type in the name Metamark at the bottom of the new folder, so the new folder says **Metamark**.

8. Now copy and paste the five series of files into the folder so they appear as below.



The next time you run Flexi, you will see the new colours in the Colour Specs dialog. You can now design in Flexi and match colours with Metamark range of SignVinyl's.

