

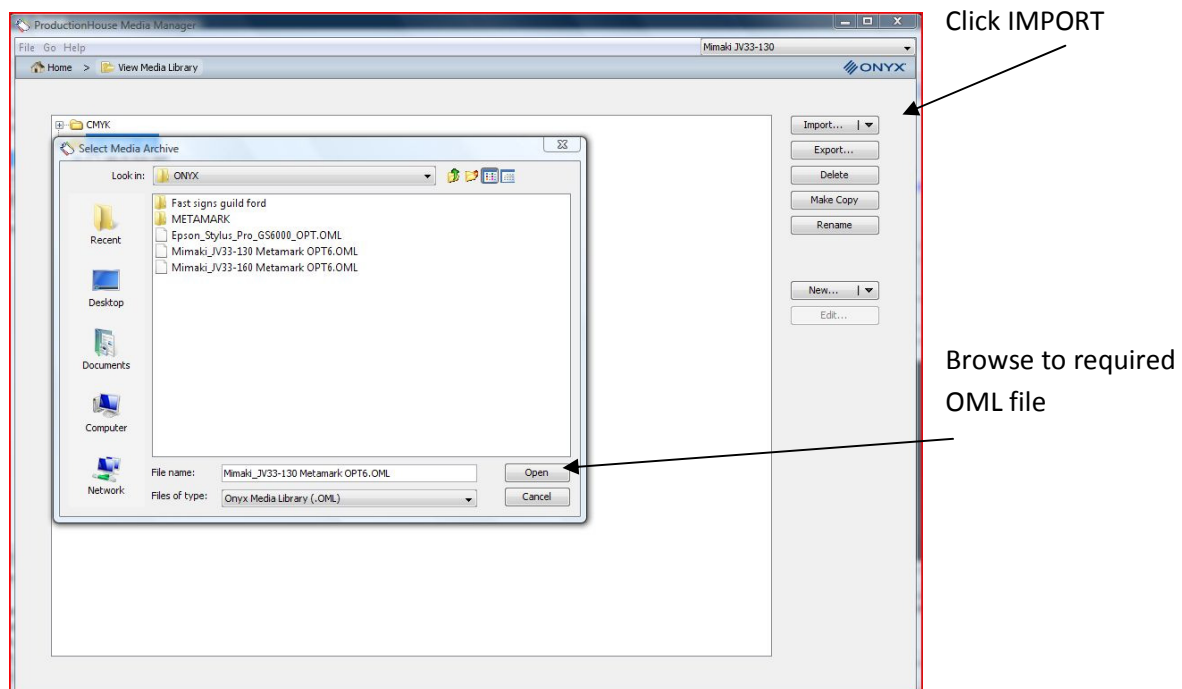
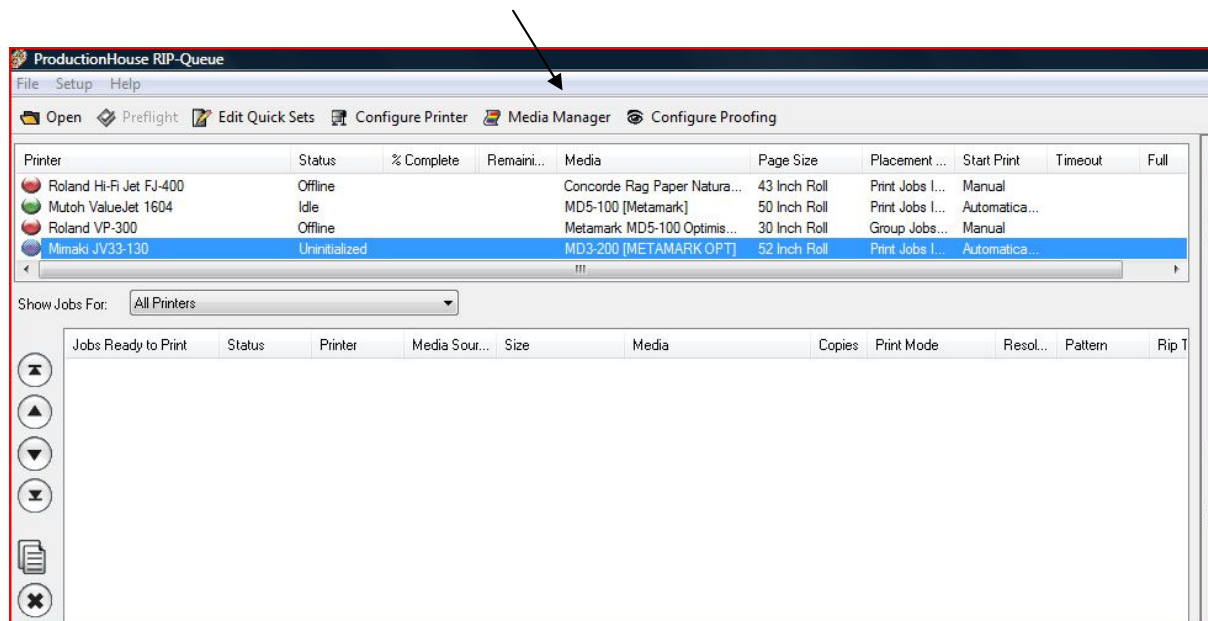
## Media Profile Installation for Onyx 7.

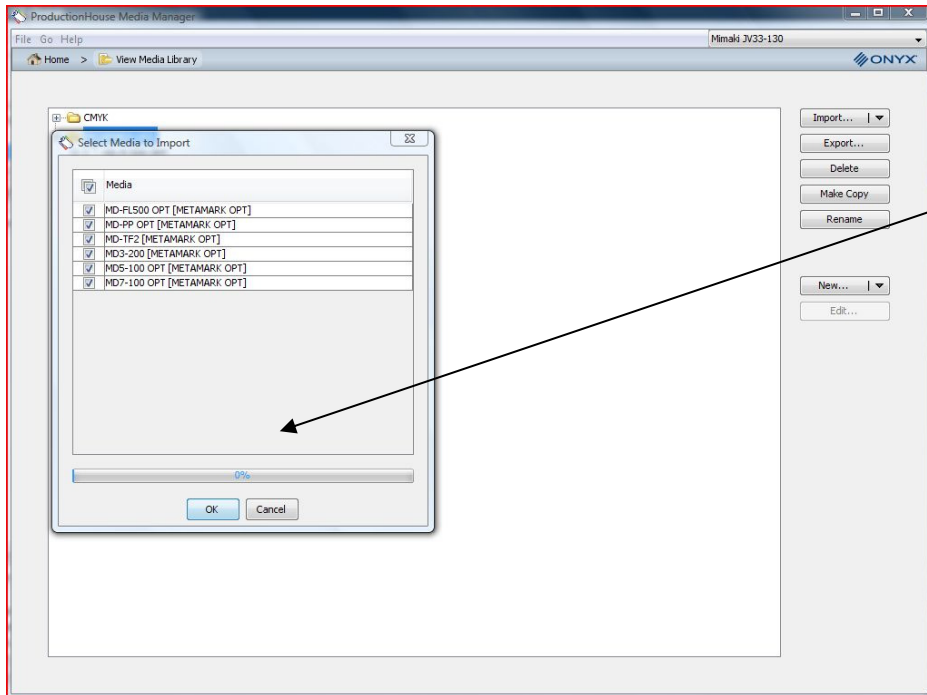
Depending on the way the Metamark media library was created, there will be 2 different ways to install the medias.

### METHOD 1.

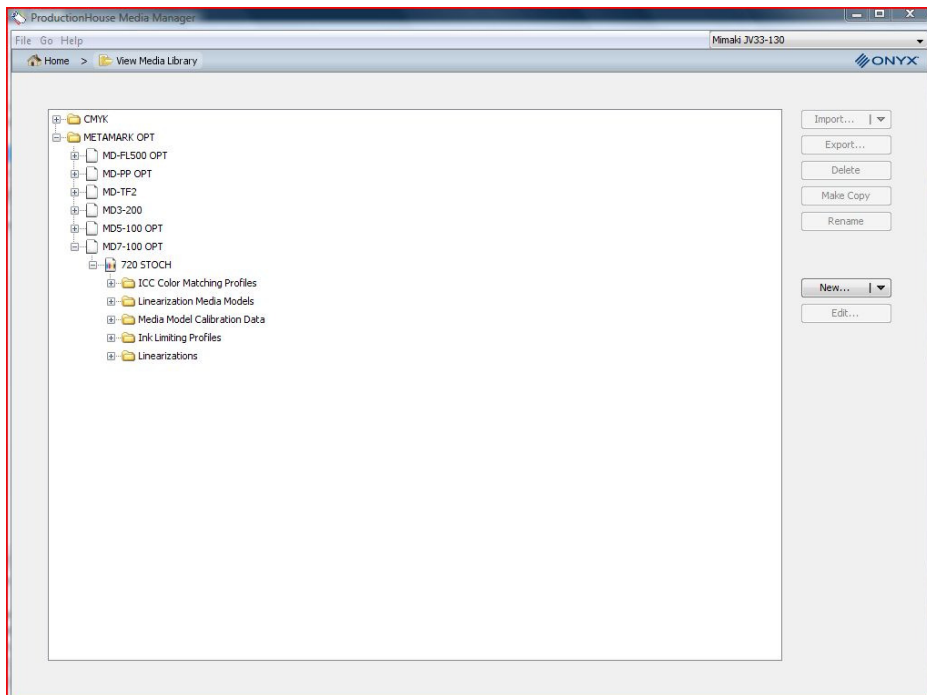
Medias supplied in OML format.

Highlight the printer in question and click MEDIA MANAGER





Highlight the medias required and click OK



Imported medias will show in library and also in RipQueue.

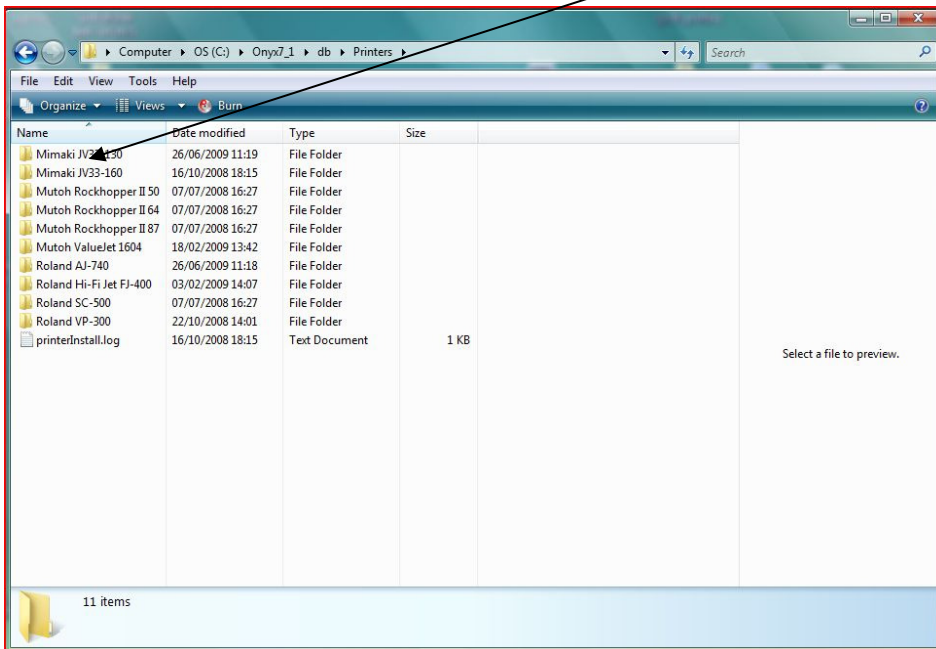
Close media manager.

## METHOD 2.

Media supplied in folder format. Close all Onyx products. Browse to the Onyx installation directory.

By default the directory will be in the C: folder.

The folder we need will be in the \onyx\db\printers folder



Copy the Metamark supplied media folder into the \onyx\db\printers\YOUR PRINTER\medias folder  
The Metamark folder may be compressed so be sure to unzip before copying across. Restart Onyx and you should have the new media group available for use.

