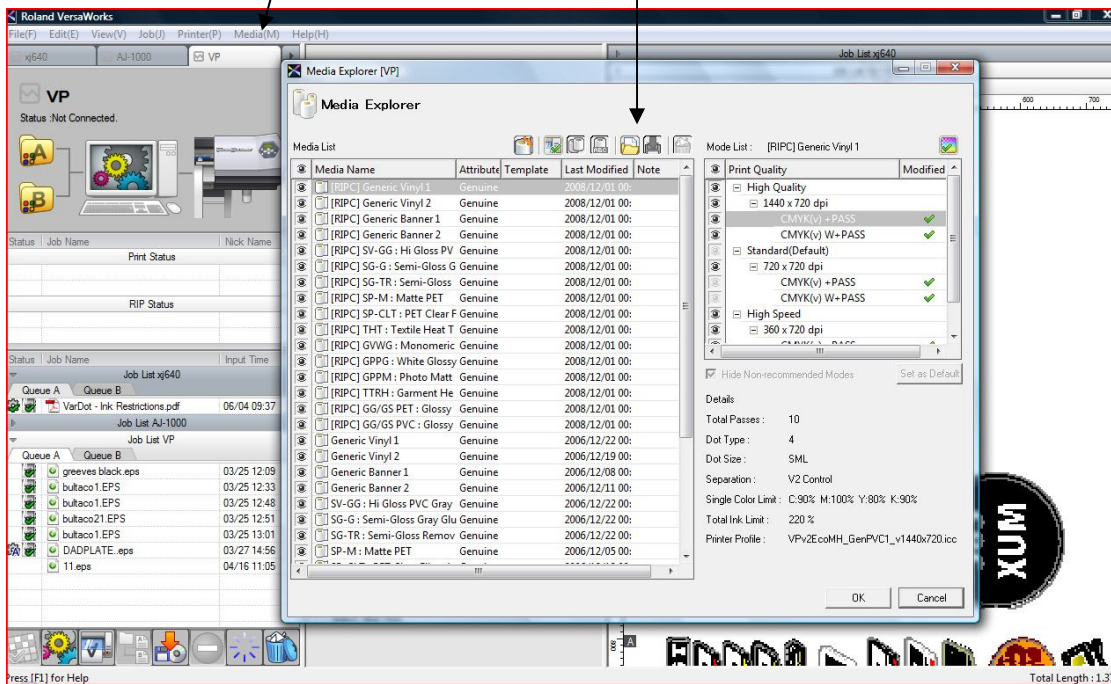


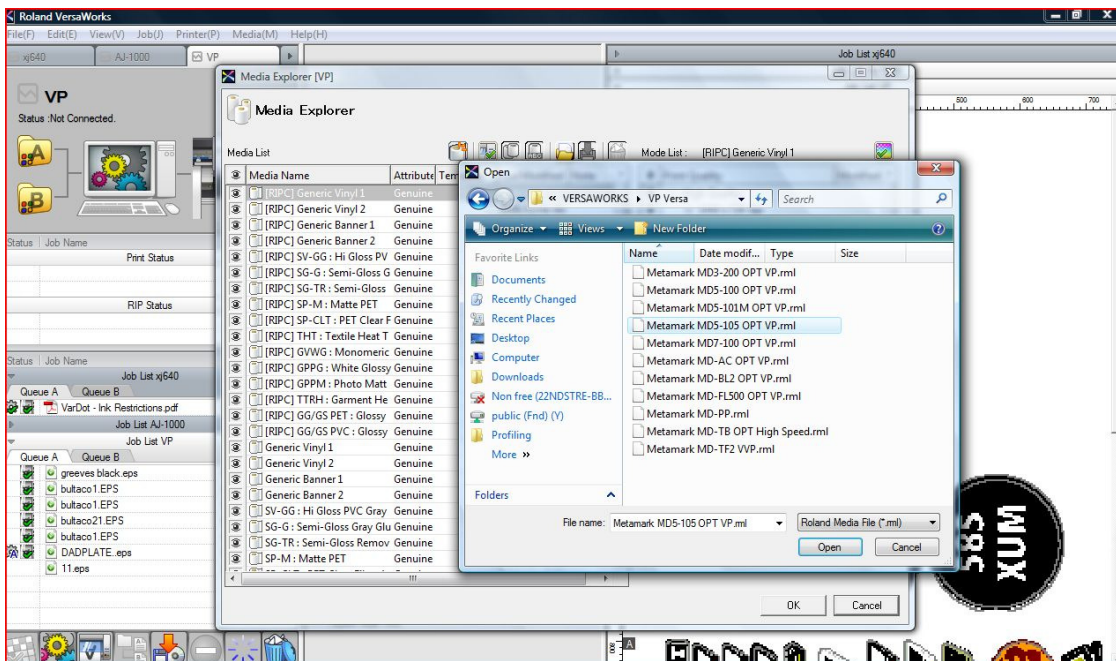
Media Profile Installation for Versaworks.

Versaworks medias are supplied in RML format. The RML files on the Metamark website may be zipped. Be sure to unzip the files or Versaworks will not recognise them.

Goto --MEDIA--MEDIA EXPLORER. Click LOAD FROM FILE



Browse to supplied Metamark RML files and select required media.



Versaworks will prompt you to allow the installation. When all medias have been imported click on ok to end the installation.

