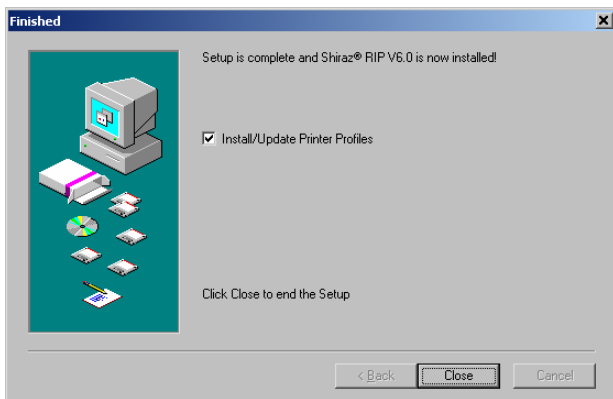


Live Update

Live Update has been created to simplify the process of obtaining new profiles for your RIP as they are released as well as installing profiles after installation. Live Update is a handy tool for that allows you to “see” what profiles are available to you from your RIP distributor and after comparison to your already installed profiles it allows you to individually select profiles to be updated.

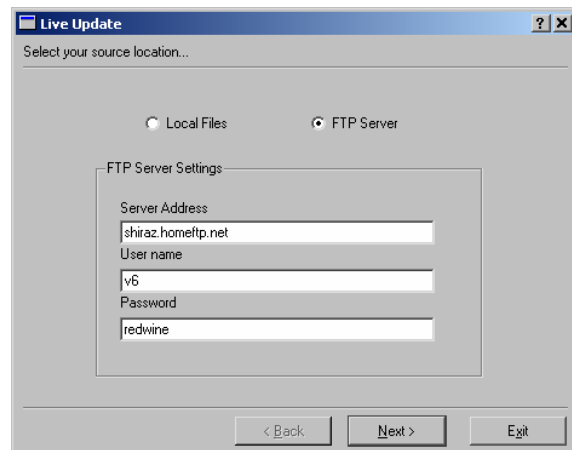
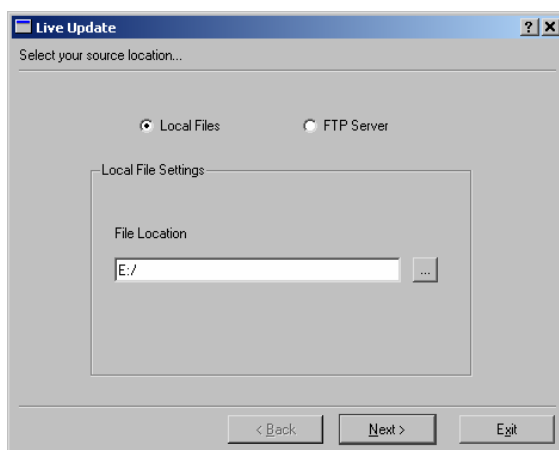
Instructions for use -

1. At the end of installing your RIP software you will be presented with the “Finished” window shown below. Here there is an option to “Install/Update Printer Profiles”. Leave this item ticked and it will automatically load Live Update for you after the close button is pressed. After your original installation, Live Update can be accessed through the Shiraz Launcher by clicking on the Tools icon and selecting “Live Update”.

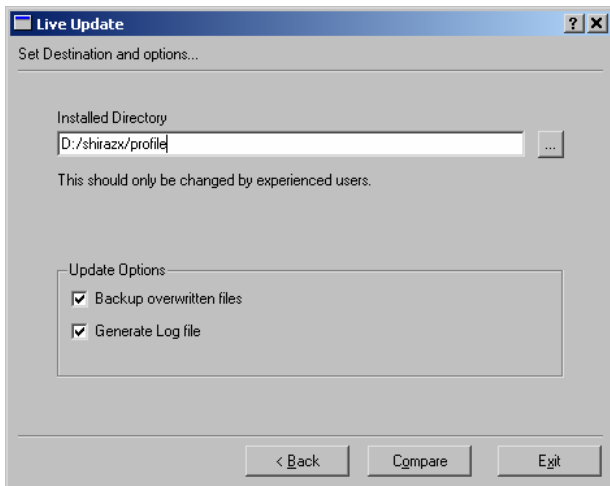


2. Both methods of loading Live Update will present you with the window shown below. It will appear in one of two ways depending on the radio button selected. If the “Local Files” radio button is selected you will be shown the window on the left allowing the user to enter a local directory (local to your computer, e.g. a disk drive or mapped network drive) pointing to the profiles. This directory should point to a directory structure similar to the Profile directory installed on your computer, i.e. the manufacture (e.g. Epson, Mutoh etc) directories will be subdirectories of this folder and the models (e.g. sp4000, sp1000cf) will be subdirectories of the manufacturer subdirectories. For example: If you had a CD in E:\ with a Profile directory containing your manufacturer subdirectories then the field “File Location” should say “E:\Profile”. If the manufacture names subdirectories were simply off the CD root directory then the field should say “E:\”.

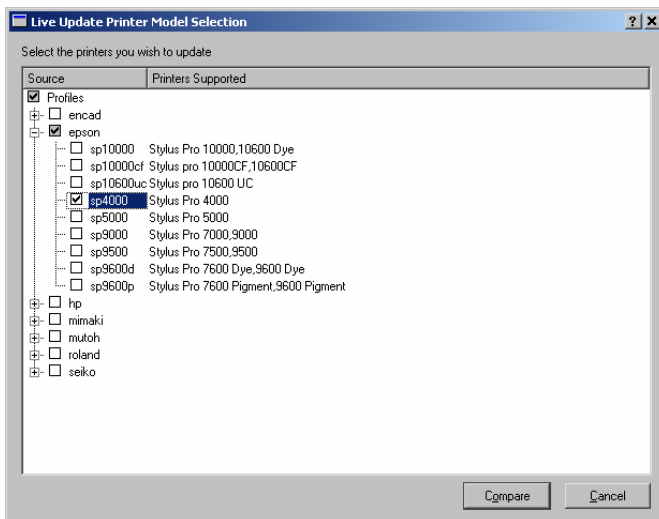
The other option, “FTP Server”, shown in the right window, requires the user to enter an FTP site, an username and a password. Your software distributor will have given you an FTP address, username and password to access all the latest profiles. Click Next to continue.



- After clicking “Next” the next window allows you to set the installed directory of the Profiles. It is not recommended to change this setting but there may be an instance where the profiles are to be installed somewhere other than your RIP installation directory. In this window there are also two options that can be set: “Backup overwritten files” renames any existing .scp file and .icc/.icm profile that is to be overwritten with a “.bak” suffix. This will allow a user to revert to a previous profile if so desired. Any information and settings entered will be saved by the program for future use. After selecting your update options, click Compare to start the process of profile comparison.



- The next window to appear, as shown below, displays a list of the printer models available at the location specified in “Source Location”. This allows you to select the printer model e.g. “Stylus Pro 4000”, or manufacturer range e.g. “Epson” that you wish to compare. This helps to reduce the comparisons performed on the ftp site and/or the computer as it will only compare the printers selected. After the initial installation it is best to only select the exact printers and model that you wish to be updated. Clicking on “Compare” will start the comparison.



- The final, and most important, screen shows the user the list of profiles found at the “Source Location”. The left list displays the models selected by the user in the previous step. The list on the right displays the profiles associated with the model currently selected in the left list. Of the profiles shown in the left list, a completely new profile will have a status of “New” and will be shown in red. A profile that exists at both destination and source and has no changes will have a status of “Same” and be shown in black. A profile that exists at both destination and source but has changed will either show “Modified”, text colour blue, if the profile at the source is newer or will show a status of “Older”, text colour green, if the profile at the source is older than the already existing profile. Also shown is the source and destination date of creation of the profile (if this information is available). For convenience four radio buttons have been added to the lower part of the window allowing you to update your profiles without selecting each and every profile that

matches your criteria. The four options are: “Selected Profiles” – only those profiles that are currently ticked; “All Profiles” – all profiles from the source will be installed; “Modified Profiles Only” – only those profiles that are newer on the source than on the destination; “New Profiles Only” – only profiles that exist on the source but not the destination. After you have selected the list of profiles you wish to update click on Install to continue. Installing from the FTP site may take a long time as these profiles must be downloaded from the site, so please be patient. After installation is complete click “Cancel” to exit the window back to the previous model selection window.

